

A reappraisal of the Middle Triassic chirotheriid *Chirotherium ibericus* Navás, 1906 (Iberian Range NE Spain), with comments on the Triassic tetrapod track biochronology of the Iberian Peninsula

Ignacio Díaz-Martínez¹, Diego Castanera², José Manuel Gasca² and José Ignacio Canudo²

¹ CONICET—Instituto de Investigación en Paleobiología y Geología, Universidad Nacional de Río Negro, General Roca, Río Negro, Argentina

² Grupo Aragosaurus-IUCA, Área de Paleontología, Facultad de Ciencias, Universidad de Zaragoza, Zaragoza, Spain

ABSTRACT

Triassic vertebrate tracks are known from the beginning of the 19th century and have a worldwide distribution. Several Triassic track ichnoassemblages and ichnotaxa have a restricted stratigraphic range and are useful in biochronology and biostratigraphy. The record of Triassic tracks in the Iberian Peninsula has gone almost unnoticed although more than 25 localities have been described since 1897. In one of these localities, the naturalist Longinos Navás described the ichnotaxon *Chirotherium ibericus* in 1906. The vertebrate tracks are in two sandy slabs from the Anisian (Middle Triassic) of the Moncayo massif (Zaragoza, Spain). In a recent revision, new, previously undescribed vertebrate tracks have been identified. The tracks considered to be *C. ibericus* as well as other tracks with the same morphology from both slabs have been classified as *Chirotherium barthii*. The rest of the tracks have been assigned to Chirotheriidae indet., *Rhynchosauroides* isp. and undetermined material. This new identification of *C. barthii* at the Navás site adds new data to the Iberian record of this ichnotaxon, which is characterized by the small size of the tracks when compared with the main occurrences of this ichnotaxon elsewhere. As at the Navás tracksite, the Anisian *C. barthii*-*Rhynchosauroides* ichnoassemblage has been found in other coeval localities in Iberia and worldwide. This ichnoassemblage belongs to the upper Olenekian-lower Anisian interval according to previous biochronological proposals. Analysis of the Triassic Iberian record of tetrapod tracks is uneven in terms of abundance over time. From the earliest Triassic to the latest Lower Triassic the record is very scarce, with *Rhynchosauroides* being the only known ichnotaxon. *Rhynchosauroides* covers a wide temporal range and gives poor information for biochronology. The record from the uppermost Lower Triassic to the Middle Triassic is abundant. The highest ichnodiversity has been reported for the Anisian with an assemblage composed of *Dicynodontipus*, *Procolophonichnium*, *Rhynchosauroides*, *Rotodactylus*, *Chirotherium*, *Isochirotherium*, *Coelurosaurichnus* and *Paratrisauropus*. The Iberian track record from the Anisian is coherent with the

Submitted 25 March 2015

Accepted 1 June 2015

Published 23 June 2015

Corresponding author

Ignacio Díaz-Martínez,
inaportu@hotmail.com

Academic editor

Kenneth De Baets

Additional Information and
Declarations can be found on
page 29

DOI 10.7717/peerj.1044

© Copyright

2015 Díaz-Martínez et al.

Distributed under

Creative Commons CC-BY 4.0

OPEN ACCESS

global biochronology proposed for Triassic tetrapod tracks. Nevertheless, the scarcity of track occurrences during the late Olenekian and Ladinian prevents analysis of the corresponding biochrons. Finally, although the Iberian record for the Upper Triassic is not abundant, the presence of *Eubrontes*, *Anchisauripus* and probably *Brachychirotherium* is coherent with the global track biochronology as well. Thus, the Triassic track record in the Iberian Peninsula matches the expected record for this age on the basis of a global biochronological approach, supporting the idea that vertebrate Triassic tracks are a useful tool in biochronology.

Subjects Biogeography, Evolutionary Studies, Paleontology

Keywords *Chirotherium ibericus*, *Chirotherium barthii*, Middle Triassic, Iberian Peninsula, Triassic geochronology, Vertebrate tracks

INTRODUCTION

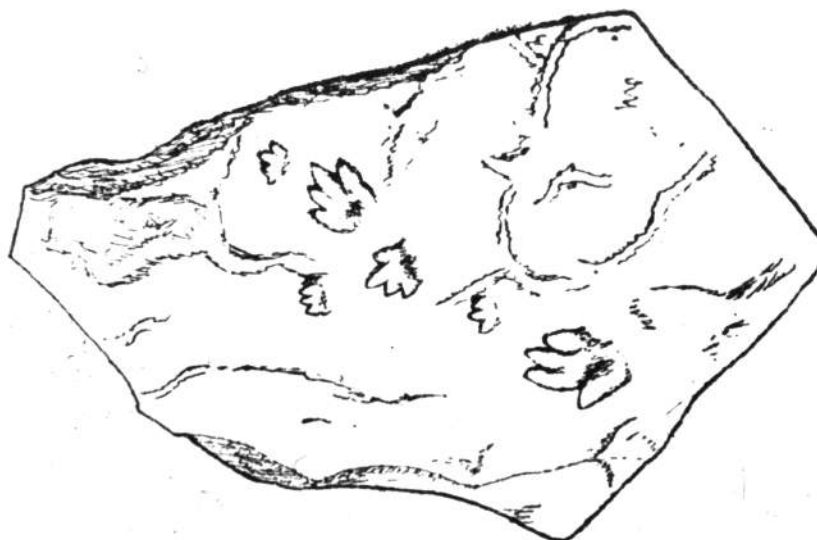
Vertebrate track morphology is mainly determined by limb motion, foot anatomy and substrate consistency, thus the studies of fossil tracks can provide insight into producer, behaviour and palaeoenvironment, representing a direct window into the lives of extinct organisms (Falkingham, 2014). Triassic tetrapod tracks have a wide distribution across the supercontinent Pangea (see Lucas, 2007; Klein & Lucas, 2010a; and references herein). The Triassic track record is archosaur, lepidosauromorph/archosauromorph- (*Rhynchosauroides*) and synapsid-dominated (Haubold, 1971; Haubold, 1984; Klein & Haubold, 2007), and includes the oldest known dinosaur tracks (Klein & Lucas, 2010a). Several recent papers have asserted the usefulness of Triassic ichnotaxa for establishing correlations between different stratigraphic units on a global scale, with emphasis on the German and North American records (Lucas, 2007; Klein & Haubold, 2007; Klein & Lucas, 2010a). Footprints are the only tetrapod fossils known in many places, thus they provide important data on vertebrate distribution in space and time (Lucas, 2007). For instance, the number and diversity of chirotheriid tracks are such that several ichnologists have seriously proposed that it is easier to study the evolution of Triassic archosaurs through their abundant tracks than through their sparse skeletal remains (Lockley & Meyer, 2000). The Triassic archosaur tracks show a distinct stratigraphic distribution pattern (limited temporal ranges) that can be ascribed to different evolutionary developments of the locomotor apparatus (Klein & Lucas, 2010a). Nevertheless, Klein & Lucas (2010a) have suggested that the “single largest problem with Triassic footprint biostratigraphy and biochronology is the nonuniform ichnotaxonomy and evaluation of footprints that show extreme variation in shape due to extramorphological (substrate-related) phenomena”. Recent studies on dinosaur tracks have shown how the substrate can influence the final track shape with significant variations within the same trackway (e.g., Razzolini et al., 2014). For instance in a Triassic context, the ichnogenus *Chirotherium* Kaup, 1935a, is one of the described ichnotaxa with the most ichnospecies, but in several recent papers some of the ichnospecies described have been considered to be extramorphological variations or synonyms of well-established ichnotaxa (Klein & Haubold, 2007; Klein & Lucas, 2010a; Xing et al., 2013).

In the Iberian Peninsula the Triassic track record has gone almost unnoticed because of its scarcity and the fact that many of the tracks were described more than a century ago (e.g., *Calderón, 1897; Navás, 1904; Navás, 1906; Gómez de Llarena, 1917*). In the last few years new discoveries and reviews of previous material have notably increased what is known of the Iberian Triassic tetrapod track record (*Gand et al., 2010; Díaz-Martínez & Pérez-García, 2011; Díaz-Martínez & Pérez-García, 2012; Fortuny et al., 2011*). The latter authors made an exhaustive review of the Triassic bone and track record in the Iberian Peninsula, putting special emphasis on the paleobiogeography. Taking into account these recent papers, 26 localities with Triassic vertebrate tracks have been described since 1897 in the Iberian Peninsula (see *Díaz-Martínez & Pérez-García, 2011; Díaz-Martínez & Pérez-García, 2012; Fortuny et al., 2012; Meléndez & Moratalla, 2014*). Most of the studies predate the 1990s, and almost all the Iberian tracks have been studied just once and only took into account their ichnotaxonomic affinities. There are some examples where the material has been reassessed, such as *Chirotherium catalaunicum* *Casnovas Cladellas, Santafé Llopis & Gómez Alba, 1979* (*Fortuny et al., 2011*), the *Chirotherium* tracks from Mallorca (*Calafat et al., 1987; Gand et al., 2010*), *Chirotherium barthii* Kaup, 1935b from Catalonia (*Calzada, 1987; Valdiserri, Fortuny & Galobart, 2009*), and the “Rillo de Gallo footprint” in Guadalajara (*Calderón, 1897; Díaz-Martínez & Pérez-García, 2012*). These reassessments have changed the initial identifications, and the age of the track-bearing layers has been taken into consideration. A number of researchers (*Gand et al., 2010; Fortuny et al., 2011; Díaz-Martínez & Pérez-García, 2012*) have emphasized the need to reappraise the Iberian Triassic vertebrate record in order to compare it with that from other coeval basins.

In the present work, we reassess the two slabs from the Moncayo massif (NE Spain) where *Chirotherium ibericus* (*Navás, 1906*) was defined (*Navás, 1904; Navás, 1906*). Since its definition, no one has yet reanalyzed this material firsthand, although it has been addressed in some ichnotaxonomic discussions (*Leonardi, 1959; Kuhn, 1963; Haubold, 1971*). During visits to the Natural Science Museum of the University of Zaragoza (Zaragoza, Spain), we have identified in the slabs new vertebrate tracks and anatomical details undescribed by *Navás (1904), Navás (1906)* and *Leonardi (1959)*. Moreover, on the basis of recent geological studies (e.g., *Díez et al., 2007; Bourquin et al., 2007; Bourquin et al., 2011*), we are able to refine the geological location of these slabs (Navás site from here). The main aim of this paper is to discuss the ichnotaxonomy of all the vertebrate tracks found in the two slabs (those classified as *Chirotherium ibericus* and the other new material associated with them). Furthermore, we review the main tetrapod track assemblages of the Iberian Triassic (only including those localities that are well dated) in order to compare them with the biochrons based on tetrapod footprints (e.g., *Klein & Haubold, 2007; Klein & Lucas, 2010a*) proposed for the Triassic.

HISTORY OF *CHIROTHERIUM IBERICUS*

The *Chirotherium ibericus* tracks were found in the summer of 1895 when the Jesuit naturalist Longinos Navás was on a field trip in the Moncayo area. The summer visitor Mr. Ignacio de Inza showed Navás the place where “two dog-like traces” were imprinted



HUELLAS DE CHEIROTHERIUM EN MONCAYO

Figure 1 Reproduction of the original drawing of Triassic ichnites. Reproduction of the original drawing of slab CS.DA.39 bearing Triassic ichnites from the Moncayo massif, made by Longinos Navás in 1895 in the field and reported by Navás (1904, p. 149).

cloven on the rock. Navás (1904) and Navás (1906) went on to identify six fossil tracks in this outcrop. His publications on Triassic tracks (Navás, 1904; Navás, 1906) reported the first occurrence of vertebrate tracks in Spain following the discovery of a cheirotheriid footprint in the Triassic of Molina de Aragón, Guadalajara province (Calderón, 1897; Díaz-Martínez & Pérez-García, 2012). The first report of the discovery was in 1904, when Navás (1904) cited the presence of “*Cheirotherium*” in the Moncayo massif, including a first drawing of the slab bearing six ichnites made in the field by himself (Fig. 1). Subsequently, Navás (1906) assigned the tracks to a new ichnotaxon, *Chirosaurus ibericus*, but without a distinctive diagnosis. Nevertheless, it cannot be considered a *nomen nudum* because he provided a detailed description and compared it with other ichnotaxa (see art. 10.1 *International Commission on Zoological Nomenclature*, 1999). At the end of Navás’s (1906) paper, he proposed the possibility of using the name *Chirotherium ibericum* instead of *Chirosaurus ibericus*. In this case, *Chirosaurus ibericus* has priority over *Chirotherium ibericum*, which is a junior synonym, since the former was used before the latter. On the other hand, the ichnogenus *Chirotherium* has priority with respect to *Chirosaurus* (see Sarjeant, 1990) so the correct way to name the ichnotaxon proposed by Navás is *Chirotherium ibericus*.

Navás (1906) proposed these tracks as a new ichnotaxon mainly on the basis of their age, size and shape. He suggested a Silurian age for the tracks, but all the other known *Chirotherium* tracks are Triassic. In addition, he compared the size of these tracks with the tracks from Molina de Aragón (Guadalajara, Spain) and those from the “British Museum of London” (today the Natural History Museum of London), concluding that the latter

were much larger. He also suggested that the digit impressions of *C. ibericus* were more slender than the other tracks to which he compared them.

The slab was excised and new tracks appeared inside that were only cited but not described by *Navás (1906)*. Finally, *Navás (1906)* proposed an amphibian as the trackmaker.

Subsequently, *Leonardi (1959)* re-studied the material of *Navás (1906)* on the basis of the previous publications and assigned the tracks from one slab to *Chirotherium ibericus* and the tracks from the other slab to *Chirotherium coltoni* (= *Isochirotherium coltoni*) *Peabody (1957)*. *Leonardi (1959)* proposed that the presence of *Chirotherium* indicated a Triassic age. Finally, *Kuhn (1963)* and *Haubold (1971)* analysed the entire bibliography on pre-Cenozoic amphibian and reptile tracks and considered the tracks of the Navás site to be *Chirotherium ibericum* and *Chirotheriidae* indet., respectively.

GEOLOGICAL SETTING

The tracks studied here are located in two excised slabs of fine-grained, bluish gray sandstones. According to the known data (*Navás, 1906; Leonardi, 1959; Bastero Monserrat, 1989*), the Navás site was located in a block of rock within Holocene deposits from the Moncayo massif, in the western part of Zaragoza province, NE Spain. The exact location is beside the road to the Moncayo Sanctuary, 700 m before the sanctuary (*Fig. 2*). The Navás site is located in the Aragonese Branch of the Iberian Range (*Fig. 2*). The Triassic of this region is composed of typical Germanic facies: detritic Buntsandstein, dolomitic Muschelkalk and lutitic-evaporitic Keuper (*Arribas, 1985*). The Moncayo massif is a structural relief that stands out from the surrounding topography and has a great richness of glacial and periglacial landforms (e.g., *Pellicer & Echeverría, 2004*). These Holocene deposits (e.g., block slopes) are formed from reworked material from the outcropping Buntsandstein facies of the Moncayo anticline (*Fig. 2, Ramírez del Pozo, 1980*).

The local series in the Moncayo outcrops is formed from Permo-Triassic detritic deposits lying unconformably on a Variscan basement (*Arribas, 1985; Díez et al., 2007*). This detritic series, lithologically composed of conglomerates, sandstones and lutites, is divided into four units: the Araviana, Tierga, Calcena and Trasobares units, in ascending stratigraphic order (*Arribas, 1985*). The basal conglomerates and lutites of the Araviana unit are attributed to the Permian based on paleopalynological data, whereas above them a noticeable hiatus has been recognized for the Lower Triassic (*Díez et al., 2007*). The Buntsandstein facies *sensu stricto* is represented by the Tierga, Calcena and Trasobares units, which are Anisian (Middle Triassic) in age based on paleopalynological data and sequence stratigraphy (*Díez et al., 2007; Bourquin et al., 2007; Bourquin et al., 2011*).

The studied track-bearing slabs were recovered within Holocene deposits from the NE slope of the Moncayo peak (*Fig. 2*); their exact stratigraphic origin cannot be specified with certainty. However, the lithological features and the nearest outcrops allow us to assign these slabs to Anisian Buntsandstein s.s. deposits, it being impossible to pinpoint their provenance specifically to one of the three local units. These deposits constitute a major cycle that can be divided into two minor cycles (*Díez et al., 2007*). The sandy nature of the

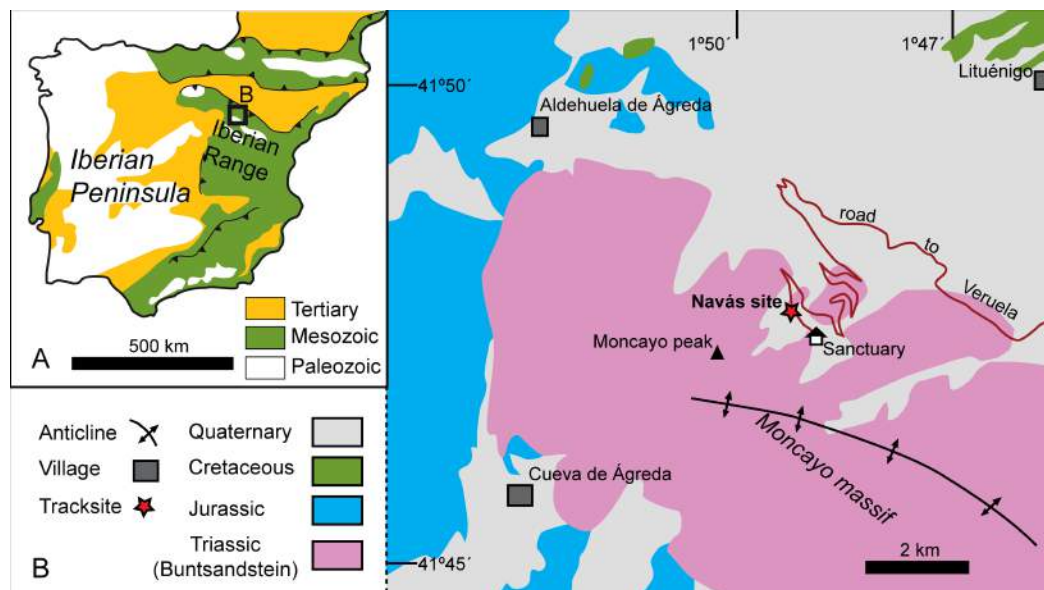


Figure 2 Geological setting of the Triassic outcrops in the Moncayo Massif. (A) Simplified geological map of the Iberian Peninsula. (B) General map of the Triassic outcrops and pictures from the Navás site. Map redrawn from MAGNA (Ramírez del Pozo, 1980).

slabs suggests that they probably belong to the Tierga-Calcena cycle in its retrogradational phase (mainly the Tierga unit), which is attributed to the lower Anisian (Diez *et al.*, 2007). The Tierga unit—about 250 m thick and mainly composed of fine to medium-grained sandstones, with interbedded silty claystones—shows an evolution from a braided river to a fluvio-lacustrine environment, whereas the overlying Calcena unit—far less thick and rich in lutite—represents heterolithic coastal plain deposits (Diez *et al.*, 2007).

Buntsandstein facies in the Iberian Range have traditionally been considered to be fluvial in origin (e.g., Arché & López-Gómez, 2006). Nonetheless, it should be noted that recently the red Buntsandstein sandstones of the south-eastern Aragonian Branch of the Iberian Chain have been reported as an evolving erg system (Soria *et al.*, 2011), in accordance with the highly arid conditions predicted by paleoclimatic models for Western Europe during the Early Triassic (Péron *et al.*, 2005).

MATERIAL AND METHODS

The analysed materials are two slabs, CS.DA.38 and CS.DA.39, which are housed in the Museo de Ciencias Naturales de la Universidad de Zaragoza, Zaragoza, Spain. The slabs have been deposited in the current institution since the late 20th century and were previously part of the collection of the Jesuit school of Zaragoza (Colegio El Salvador) at which Longinos Navás was teaching. The tracks were drawn using a large sheet of plastic. All the tracks were photographed individually, were measured (Fig. 3) and were labeled with the acronyms CS.DA.38.X or CS.DA.39.X (Figs. 4–6), depending on the slab and the position within the slab. CS.DA is the official label assigned by the Jesuit school and later

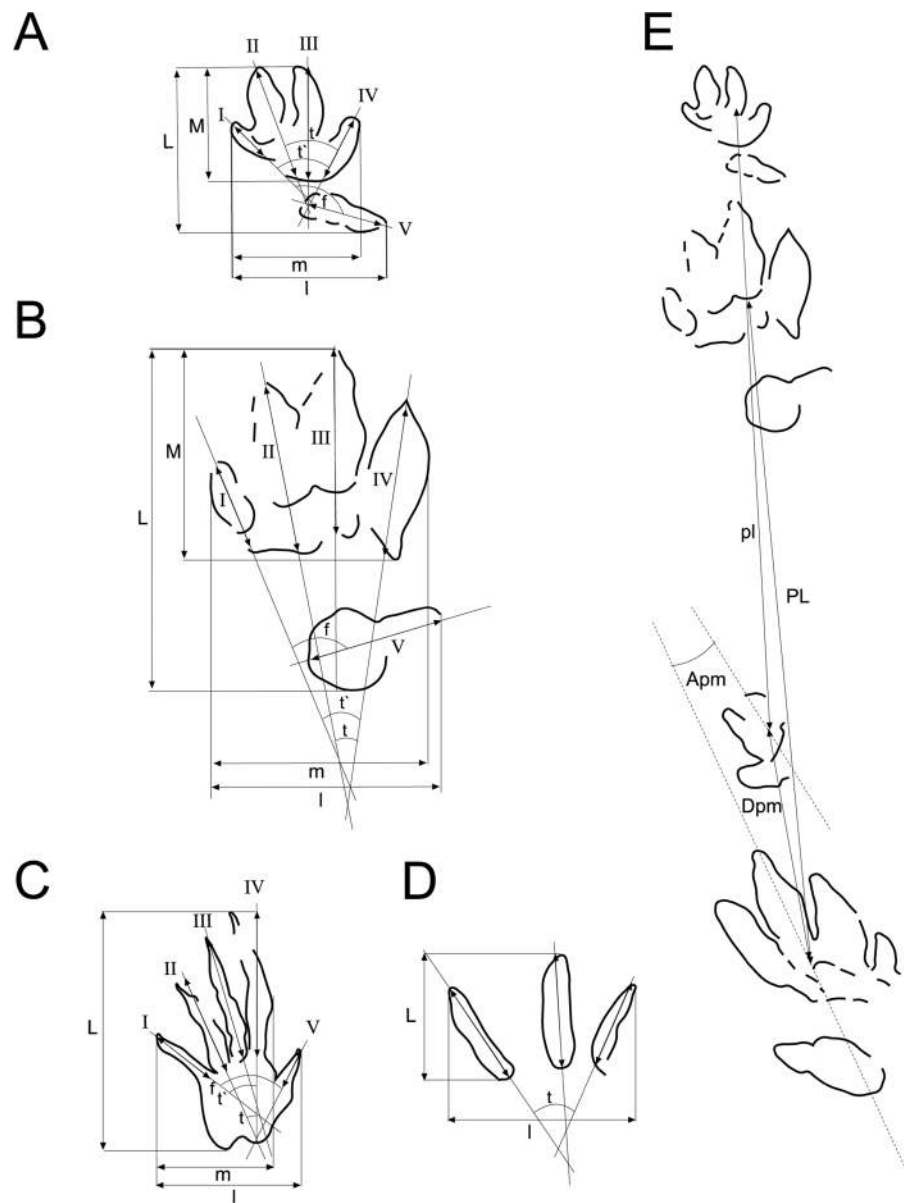


Figure 3 Scheme used for the measurements of the tracks and trackways. Scheme and measurements based on *Demathieu & Wright (1988)* and *Clark, Aspen & Corrance (2002)* for: (A) chirotheriid tracks, (B) *Rhynchosauroides* tracks, (C) tridactyl tracks, (D) trackways. Abbreviations in ‘Material and Methods’.

maintained in the Natural Science Museum of the University of Zaragoza. In addition, m/p refers to manus (forelimb) and pes (hindlimb) tracks respectively.

The slabs have dimensions of 1.3 m length by 0.88 m width and 0.14 m thickness. The tracks which Navás sketched and identified as a single trackway in the papers of 1904 and 1906 in slab CS.DA.39 (*Navás, 1904*) are in fact part of two incomplete trackways (CS.DA.39.1.1p, CS.DA.39.1.1m, CS.DA.39.1.2p, CS.DA.39.1.2m and CS.DA.39.2.1m and one isolated track CS.DA.39.9) (*Figs. 1* and *4–6*). The tracks in slab CS.DA.39 are at the



Figure 4 Picture and sketch map of slab CS.DA.38.

bottom and are stratigraphically beneath slab CS.DA.38. The natural casts of CS.DA.38 are located on the top of CS.DA.39.

Within slab CS.DA.38 (Figs. 4 and 6) we have identified three partial trackways (CS.DA.38.1–CS.DA.38.2 and CS.DA.38.4), a manus-pes track set (CS.DA.38.3) and three isolated tracks (CS.DA.38.5–CS.DA.38.7). In slab CS.DA.39 (Figs. 5 and 6), three partial trackways (CS.DA.39.1–CS.DA.39.3), five tracks (CS.DA.39.4–CS.DA.39.8) that could represent a trackway, and two isolated tracks (CS.DA.39.9–CS.DA.39.10) have been studied. In total, 28 vertebrate tracks have been studied (12 in CS.DA.38 and 18 in CS.DA.39).

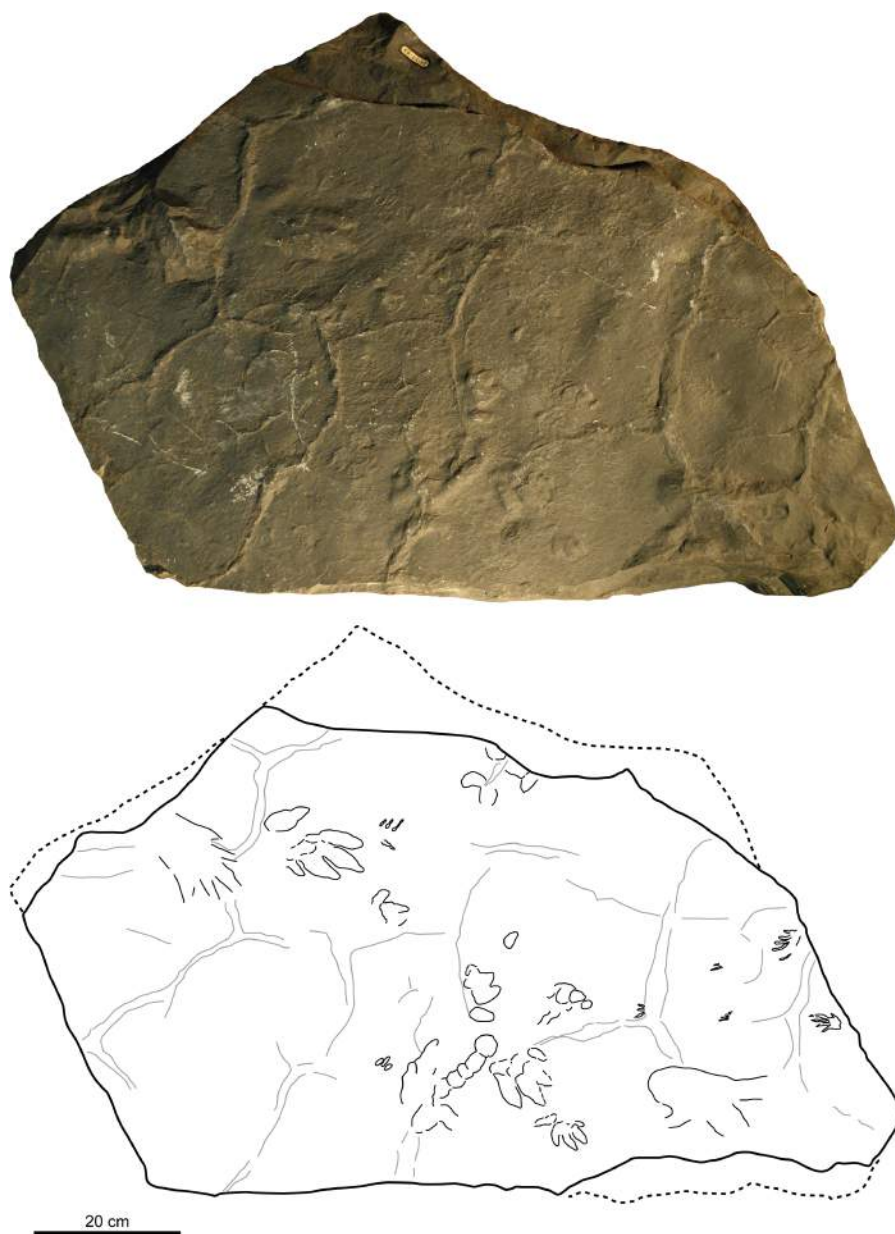


Figure 5 Picture and sketch map of slab CS.DA.39.

Measurements were taken mainly according to *Demathieu & Wright (1988)* and *Clark, Aspen & Corrance (2002)* (see [Fig. 3](#)). Ichnotaxonomic discussions are mainly based on *Avanzini & Renesto (2002)*, *Demathieu & Demathieu (2004)*, *Fichter & Kunz (2004)*, *King et al. (2005)* and *Valdiserri & Avanzini (2007)*. In analysing and describing the skin marks we follow *Avanzini (2000)* and *Kim et al. (2010)*.

The measurements taken were ([Fig. 3](#); [Tables 1–3](#)): L, track length; l, track width; M, length set of I–IV; m, width set I–IV; I, length digit I; II, length digit II; III, length digit III; IV, length digit IV; V, length digit V; t, divarication II–IV; t', divarication I–IV; f,

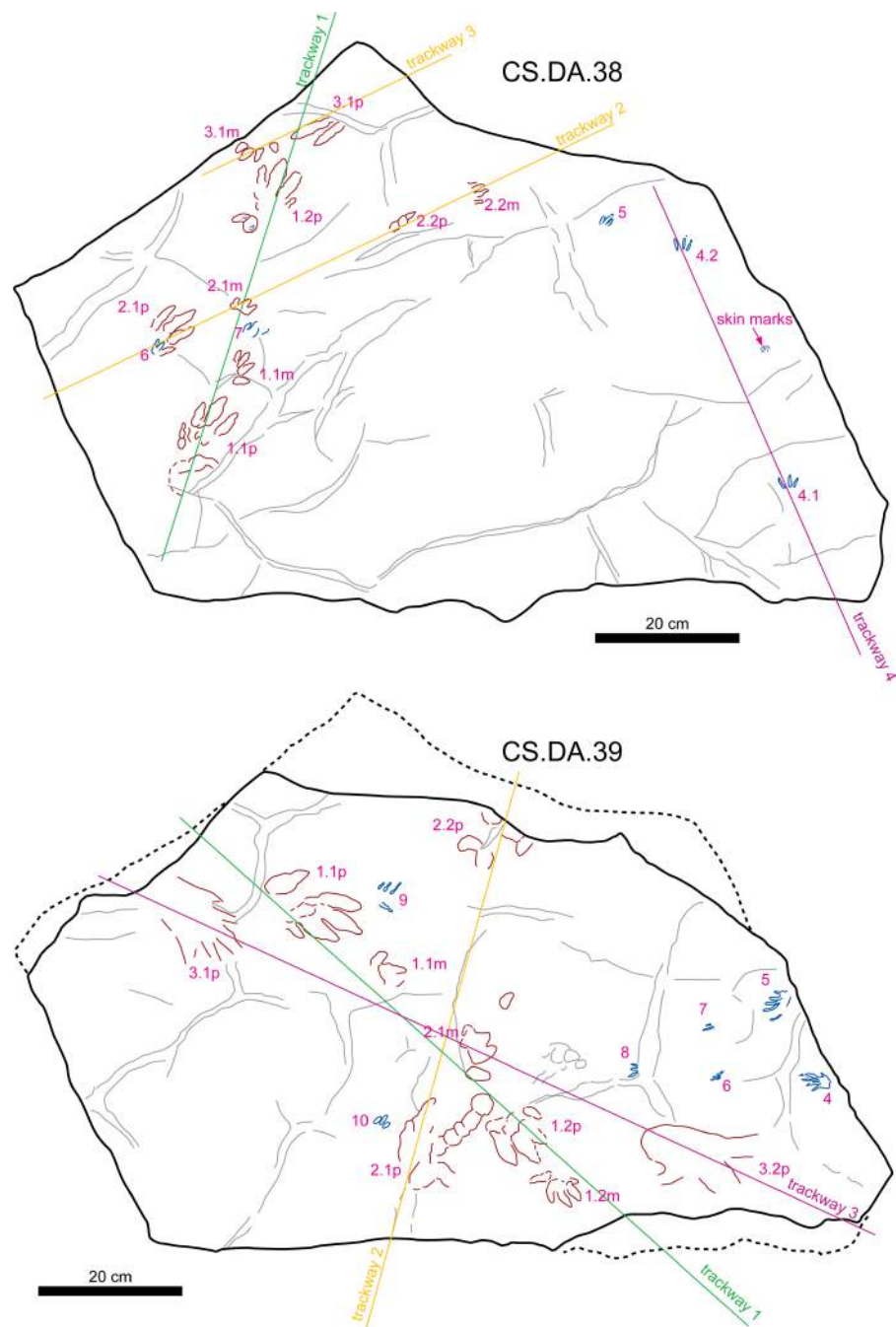


Figure 6 Sketch map of slabs CS.DA.38 and CS.DA.39 with the acronyms of each track.

divarication I–V; PL, pace length; Apm, angle between pes and manus; and Dpm, distance between pes and manus. All parameters are given and compared in cm, except t, t', f, and Apm, which are given in degrees.

Furthermore, the entire bibliography relating to the record of Iberian Triassic tracks is revised in order to allow comparison with the global tetrapod track biochronology

Table 1 Measurements of the *Chirotherium barthii* tracks from the Navás site. Measurements (in cm and degrees) of the *Chirotherium barthii* tracks from the Navás site. Abbreviations are listed in ‘Material and Methods’.

	L	M	l	m	I	II	III	IV	V	t	t'	f	PL	pl	Apm	Dpm
38.1.1p	11.7	8	–	5.6	3.7	5.4	7.5	6.1	–	25	39	78	33.8	–	21	11.3
38.1.1m	4.7	3.3	–	–	–	1.4	2.3	2.8	2.3	45	–	–	–	–	–	–
38.1.2p	11.2	8	7.5	6.1	–	–	–	6.1	3.7	23	45	85	–	–	–	–
38.2.1p	–	–	–	–	–	3.7	5.2	4.2	–	20	28	–	35	–	30	11.8
38.2.1m	–	–	–	–	–	1.4	1.8	–	–	30	–	–	–	36	–	–
38.2.2p	–	–	–	–	–	–	–	–	–	–	–	–	–	–	–	11.8*
38.2.2m	–	–	–	–	–	–	–	–	–	–	–	–	–	–	–	–
38.3.1p	–	–	–	–	–	–	–	–	–	–	–	–	–	–	20	11.8*
38.3.1m	4.7	2.8	–	–	–	1.4	1.8	2.4	1.8	41	–	–	–	–	–	–
39.1.1p	14.5	8.9	8.9	7.5	–	7.9	9.4	7.4	5.2	29	43	79	42	–	–	14.1
39.1.1m	–	–	–	–	–	–	–	3.3	2.8	–	–	–	–	38.5	–	–
39.1.2p	13.1	8.9	7.9	7.9	2.8	6.1	7.5	6.6	4.7	18	42	85	–	–	14	11.8
39.1.2m	5.6	4.2	6.1	4.7	1.4	3.3	3.8	3.3	3.3	33	65	145	–	–	–	–
39.2.1p	13.1	–	–	–	–	–	–	–	–	–	–	–	45.1	–	–	16.4
39.2.1m	6.1	–	–	–	–	3.3	4.2	4.2	3.7	48	–	–	–	–	–	–
39.2.2p	–	–	–	–	–	–	–	–	5.2	–	–	86	–	–	–	–

Notes.

* Estimate.

Table 2 Measurements of the *Rhynchosauroides* tracks from the Navás site. Measurements (in cm and degrees) of the *Rhynchosauroides* tracks from the Navás site. Abbreviations are listed in ‘Material and Methods’.

	L	l	m	I	II	III	IV	V	t	t'	f
39.4	4.6	2.7	2.4	1.6	2	2.5	2.8	0.8	10	50	78
39.5	–	–	–	0.9	1.7	2	2.6	–	15	30	–
39.6	–	–	–	–	–	–	–	–	–	–	–
39.7	–	–	–	–	–	–	–	–	–	–	–
39.8	–	–	–	–	–	–	–	–	–	–	–
39.10	4.6	–	–	–	1.3	1.7	2.3	2.2	13	–	–

Table 3 Measurements of the undetermined tracks from the Navás site. Measurements (in cm and degrees) of the undetermined tracks from the Navás site. Abbreviations are listed in ‘Material and Methods’.

	L	l	II	III	IV	t	PL
38.4.1	2	2.8	1.7	1.8	1.5	48	37
38.4.2	2.4	2.5	1.7	1.9	1.8	35	–
38.5	2.3	1.6	1.4	1.9	1.4	18	–
38.6	2.3	–	1.4	1.6	–	–	–
38.7	2.4	–	1.7	1.7	–	–	–
39.11	2	2.2	1.4	1.8	1.4	12	–

Table 4 Summary of the published Triassic tracks from the Iberian Peninsula that are located in a concrete chronostratigraphic age. Only the most recent ichnotaxonomic determination is considered.

Ichnotaxon	Age	Reference
<i>Dicynodontipus</i> isp.	Anisian	Valdiserri, Fortuny & Galobart (2009)
<i>Procolophonichnium</i> isp.	Anisian	Valdiserri, Fortuny & Galobart (2009)
<i>Rhynchosauroides</i> isp.	Anisian (Fortuny et al., 2012)	Calzada (1987)
<i>Rhynchosauroides</i> cf. <i>beasleyei</i>	Anisian (Fortuny et al., 2012)	Calzada (1987)
<i>Rhynchosauroides</i> isp.	Anisian	Valdiserri, Fortuny & Galobart (2009)
<i>Rhynchosauroides</i> isp.	Olenekian-Anisian	Gand et al. (2010)
<i>Rhynchosauroides</i> isp.	Anisian	Gand et al. (2010)
<i>Rhynchosauroides</i> isp.	Anisian	In this work
<i>Rotodactylus</i> sp.	Anisian	Valdiserri, Fortuny & Galobart (2009)
<i>Brachychirotherium</i> cf. <i>gallicum</i>	Upper Triassic?	Pérez-López (1993)
<i>Brachychirotherium gallicum</i>	Anisian	Gand et al. (2010)
<i>Brachychirotherium</i> isp.	Anisian	Gand et al. (2010)
<i>Chirotherium barthii</i>	Anisian (in this work)	In this work
<i>Chirotheium barthii</i>	Anisian (Fortuny et al., 2012)	Calzada (1987)
<i>Chirotherium barthii</i>	Anisian	Valdiserri, Fortuny & Galobart (2009)
<i>Chirotherium barthii</i>	Anisian	Gand et al. (2010)
<i>Chirotherium</i> isp.	Anisian	Gand et al. (2010)
<i>Isochirotherium soergeli</i>	Anisian	Valdiserri, Fortuny & Galobart (2009)
<i>Isochirotherium</i> cf. <i>coureli</i>	Anisian	Gand et al. (2010)
<i>Synaptichnium</i> isp.	Anisian (Fortuny et al., 2012)	Calzada (1987)
<i>Synaptichnium</i> isp.	Anisian	Valdiserri, Fortuny & Galobart (2009)
Chirotheriid	Ladinian-early Carnian	Fortuny et al. (2012)
Chirotheriid	Ladinian	Meléndez & Moratalla (2014)
Chirotheriid	Anisian	In this work
<i>Eubrontes</i> isp.	Rhaetian	Pascual-Arribas & Latorre-Macarrón (2000)
<i>Anchisauripus</i> isp.	Rhaetian	Pascual-Arribas & Latorre-Macarrón (2000)
<i>Coelurosaurichnus perriauxi</i>	Anisian	Gand et al. (2010)
<i>Paratrisauropus latus</i>	Anisian	Gand et al. (2010)
Archosauria	Landian	Demathieu, Pérez-López & Pérez-Lorente (1999)

proposed by Klein & Haubold (2007) and Klein & Lucas (2010a). The information that we used is presented in simplified form in Table 4 and in the Table S1.

SYSTEMATIC ICHNOLOGY

Ichnofamily Chirotheriidae Abel, 1935

Ichnogenus *Chirotherium* Kaup, 1835a

Chirotherium barthii Kaup, 1835b

(Figs. 4–8)

- 1904 *Cheirotherium* Navás, p. 149.
 1906 *Chirosaurus ibericus* Navás, p. 208, Figs. 2 and 3.
 1906 *Chirotherium ibericum* Navás, p. 213, Figs. 2 and 3.
 1959 *Chirotherium ibericus* Leonardi, p. 243, photograph 3.
 1959 *Chirotherium coltoni* Leonardi, p. 243.
 1963 *Chirotherium ibericum* Kuhn, p. 71.
 1971 Chirotheriidae indet. Haubold, p. 58.

Referred specimens: CS.DA.38.1.1p, CS.DA.38.1.1m, CS.DA.38.1.2p, CS.DA.38.2.1p, CS.DA.38.2.1m, CS.DA.38.2.2p, CS.DA.38.2.2m, CS.DA.38.3.1p, CS.DA.38.3.1m, CS.DA.39.1.1p, CS.DA.39.1.1m, CS.DA.39.1.2p, CS.DA.39.1.2m, CS.DA.39.2.1p, CS.DA.39.2.1m and CS.DA.39.2.2p.

Material: 16 tracks (four partial trackways and one pes/manus set) in the two slabs (nine in CS.DA.38 and seven in CS.DA.39); some of them show skin and phalangeal pad impressions (Figs. 4–8; Table 1).

Horizon and locality: Buntsandstein facies, Anisian (Middle Triassic); Navás site (Moncayo massif, Zaragoza, Spain).

Description:

Manus: There are seven manus tracks but only one is complete, CS.DA.39.1.2m. It is pentadactyl, mesaxonic, asymmetric and digitigrade (Fig. 7). The length of the manus tracks varies from 4.7 cm to 6.1 cm, and the width of the only complete track is 6.1 cm. Four digit impressions (I–IV) are directed forward, and one, the digit V impression, is directed laterally. Digit I is often poorly preserved or absent. There is little difference in the length of digits III and IV, which are longer than digits I (the smallest) and II. Digit V is situated proximally below digit IV. It is divergent (from the long axis through digit III) and separated from the other digits. Digits I, II, III and IV fuse at their proximal ends but do not present clear metacarpal pads. At least four of the digits (I–IV) have an acuminate end, although these are not as prominent as those on the pes. The divarication angle II–IV is from 30° to 48°. The angulation between digits I–IV and I–V is 65° and 145° respectively in CS.DA.39.1.2m (see Table 1).

The manus tracks are more poorly-preserved than the pes tracks. The manus is relatively small compared to the pes, with the manus-pes length ratio ranging from 0.4 to 0.46.

Pes: These are pentadactyl, mesaxonic, asymmetric and semiplantigrade tracks (see Fig. 7). Four digit impressions (I–IV) are directed forward, and one, the digit V impression, is directed laterally. They are longer than wide. The length of the pes print varies from 11.2 cm to 14.5 cm, and the width ranges from 7.5 cm to 8.9 cm. The length to width ratio varies from 1.5 to 1.65. Digits I–IV form an isolated group that is longer (from 8 to 8.9 cm) than wide (from 5.6 to 7.9 cm). The digits are longer than wide and have an acuminate end. Digit III is slightly longer than digit IV and digit II. Digit I is the smallest (III > IV > II > I); it is located posteriorly and is usually the worst preserved. The divarication angle II–IV varies from 18° to 29° and I–IV from 28° to 45°. Digits I–IV show clear impressions of digital pads, but not metatarsal pads. Digit V is rotated outwards with respect to digit IV. It shows

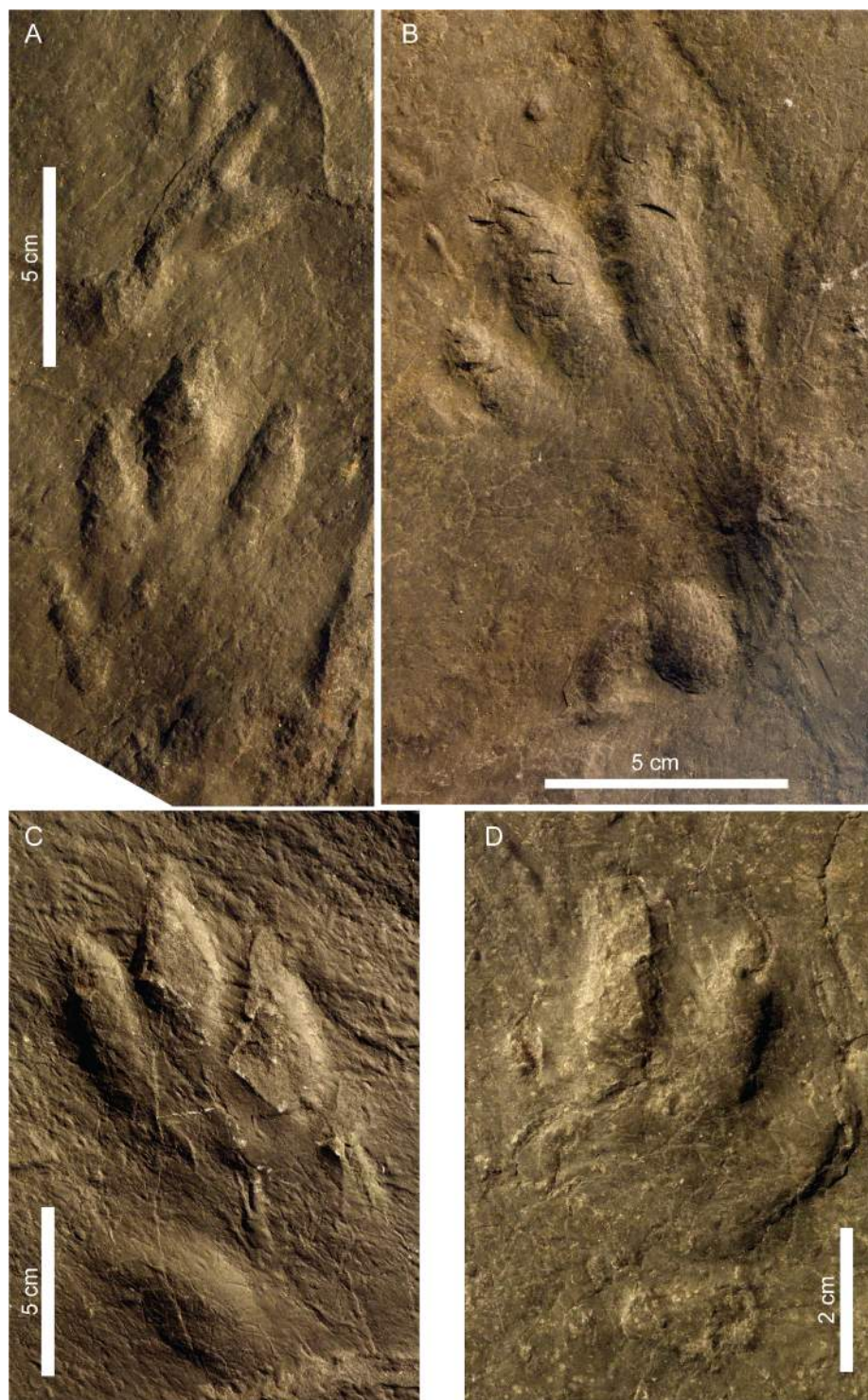


Figure 7 Pictures of the studied tracks assigned to *Chirotherium barthii*. (A) CS.DA.38.1.1p and CS.DA.38.1.1m. (B) CS.DA.38.1.2p. (C) CS.DA.39.1.1p. (D) CS.DA.39.1.2m (see location in Fig. 6).

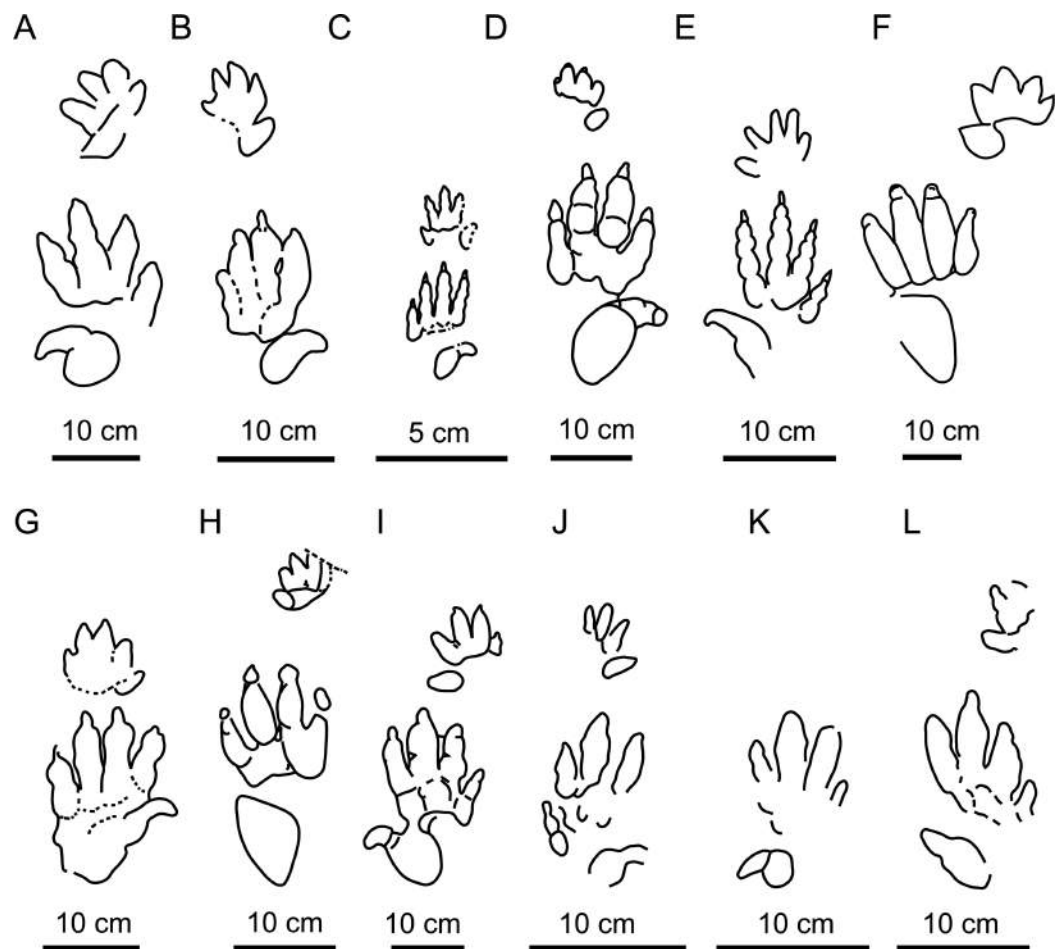


Figure 8 Main *Chirottherium* ichnospecies compared with the Navás site tracks. (A) *C. vorbachii* (redrawn from King et al., 2005). (B) *C. sickleri* (redrawn from Haubold, 1971). (C) *C. lulli* (redrawn from Baird, 1954). (D) *C. lomasi* (redrawn from Baird, 1957). (E) *C. storetonense* (redrawn from King et al., 2005). (F) *C. rex* (redrawn from Peabody, 1957). (G) *C. wondrai* (redrawn from Haubold, 1971). (H) *C. coureli* (redrawn from Demathieu, 1970). (I) *C. barthii* (redrawn from Haubold, 1971). J: CS.DA.38.1.1p. K: CS.DA.38.1.2p. and L: CS.DA.39.1.1p.

a subovoid impression of the metatarsal pad. The angulation between digit I–V varies from 78° to 86° . In the pes track CS.DA.38.1.2p skin impressions are recognizable. Another part of the slab with skin-like marks has been found, but there are not any tracks associated with it. In both cases, they are very small in size, about 1 mm on the digit V surface (Fig. 9A). Their shape is predominantly subrounded and does not show a distinct ornamentation. Impressions are separated by a thin and non-imbricated depression.

Trackway: There are four partial trackways and one manus-pes set (see Figs. 4–7). The manus is rotated outward 14° – 30° with respect to the pes. The manus/pes distances range from 11.3 cm to 16.4 cm. The manus is placed in front of, and to the inside of, the pes (usually with the outer edge of the manus in line with the outer edge of the pes). The pace length between pes tracks is from 33.8 cm to 42 cm, and between manus tracks from 36 cm to 38.5 cm.

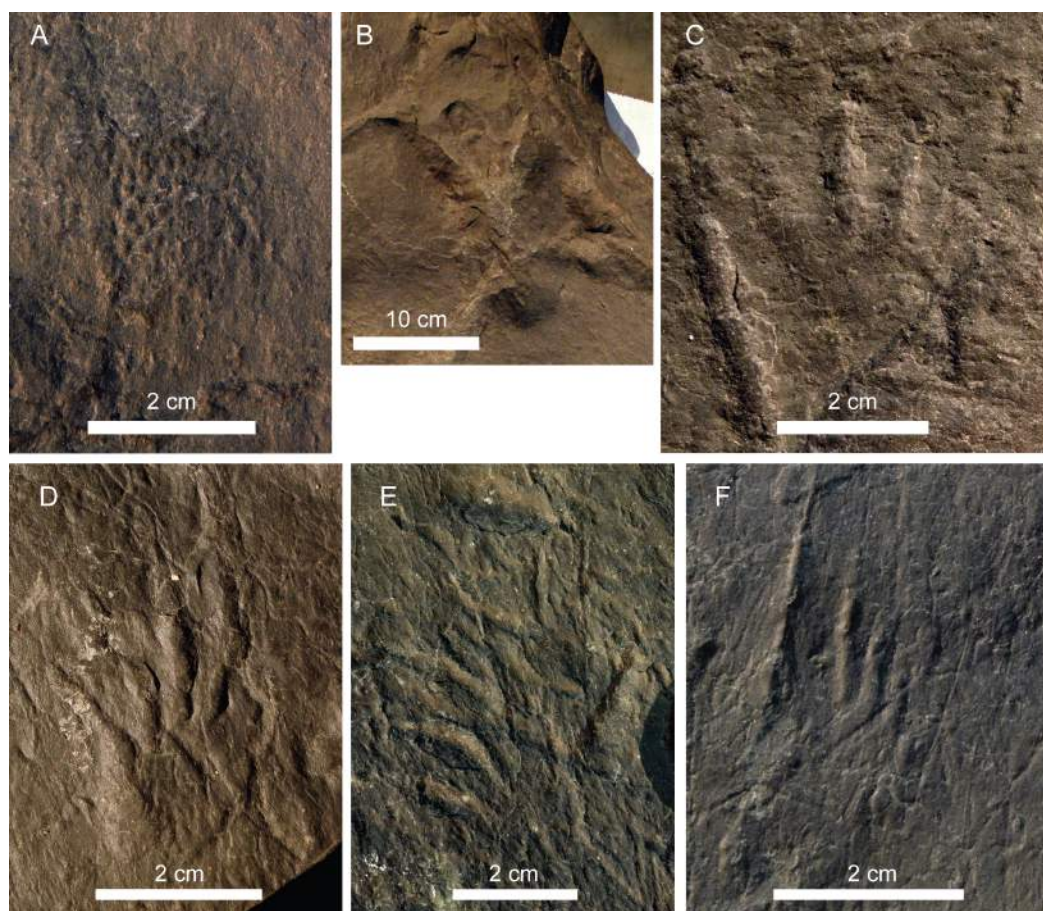


Figure 9 Photographs of the new identified material. (A) Isolated set of skin impressions from the slab CS.DA.38 (see location in Fig. 6). (B) Chirotheriidae indet., CS.DA.39.3.2p. (C) Undetermined material (unnamed morphotype), CS.DA.38.4.1. (D) *Rhynchosauroides* isp., CS.DA.39.4. (E) *Rhynchosauroides* isp., CS.DA.39.9. (F) *Rhynchosauroides* isp., CS.DA.39.5.

Remarks:

The tracks in both slabs have the same general shape. Although there is slight variability among them, we consider that this variability is a consequence of preservational factors. The main difference between the tracks is the size. The tracks in CS.DA.38 are slightly smaller than the CS.DA.39 tracks (see Table 1). Nevertheless, we consider that size is not a valid ichnotaxobase (see Bertling et al., 2006), and therefore we have classified all of them in the same way.

Since the pes tracks are semiplantigrade and pentadactyl with a compact anterior digit I–IV group and a posterolaterally positioned digit V, and the manus tracks are smaller than the pes tracks, pentadactyl, mesaxonic, asymmetric and digitigrade, they can be attributed to the ichnofamily Chirotheriidae (cf. Demathieu & Demathieu, 2004; King et al., 2005).

Demathieu & Demathieu (2004) and King et al. (2005) proposed the proportions of pes digits I–IV as the most important feature for distinguishing chirotheriid ichnogenera, whereas the length, shape and position of digit V are variable (Klein & Haubold, 2003). The

ichnofamily Chirotheriidae is composed of nine ichnogenera: *Brachychirotherium* [Beurlen, 1950](#); *Chirotherium*; *Isochirotherium* [Haubold, 1971](#); *Paleochirotherium* [Fichter & Kunz, 2011](#); *Parachirotherium* [Kuhn, 1958](#); *Protochirotherium* [Fichter & Kunz, 2004](#); *Parasynaptichnium* [Mietto, 1987](#); *Sphingopus* [Demathieu, 1966](#); and *Synaptichnium* [Nopcsa, 1923](#). Five of these, *Brachychirotherium*, *Chirotherium*, *Isochirotherium*, *Parachirotherium* and *Sphingopus*, are mesaxonic, and only in three of these, *Brachychirotherium*, *Chirotherium* and *Isochirotherium* do the digit I–IV impressions form an isolated group. The tracks from the Navás site belong to *Chirotherium* because the digit IV impression is normally longer than II and the digit II–IV impressions are similar in thickness. In *Isochirotherium* digit II is always longer than digit IV, and in *Brachychirotherium* digits II and III are thicker than digits I, IV and V (*sensu* [Haubold, 1971](#); [King et al., 2005](#)).

The studied material, classified as *C. ibericus* by [Navás \(1906\)](#), and other material of the same shape, presents the digit III impression slightly longer than digits II and IV. This character differentiates it from *C. vorbachi* [Kirchner, 1927](#) ([Fig. 8A](#)), which is much more mesaxonic. Furthermore, it is characterized by a digit IV impression that is slightly longer and often thinner than digit II. It differs from *C. sickleri* [Kaup, 1835c](#), *C. lulli* [Bock, 1952](#), and *C. eyermani* [Baird, 1957](#), which present digit IV clearly longer than digit II ([Figs. 8B–8D](#)), and from *C. storetonense* [Morton, 1863](#), which has digit II thinner than digit IV ([Fig. 8E](#)). Additionally, the digit I impression is smaller and thinner than the digit II–IV impressions, and located forwardly and slightly independently with respect to digits II–IV. These characters differentiate it from *C. rex* [Peabody, 1948](#), *C. wondrai* [Heller, 1952](#), and *C. coureli* [Demathieu, 1970](#), which have a more robust digit I impression positioned at the same proximal position as the other digits and forming a more compact group I–IV ([Figs. 8F–8H](#)). The only ichnotaxon that shares all the above-described characters with the studied material is *C. barthii* ([Fig. 8I](#)). Only size differentiates them from one another. The Navás site tracks ([Figs. 8J–8L](#)) are smaller than the holotype of *C. barthii*. Nevertheless, we consider that size is not a valid ichnotaxobase because it can merely represent an ontogenetic variation. Accordingly, we regard the two types of track as the same. *C. barthii* was defined in 1835 by Kaup on the basis of Middle Triassic tracks from Germany. Therefore, *C. barthii* has temporal priority with respect to the ichnotaxon *C. ibericus*, and the latter is a junior synonym of *C. barthii*.

Ichnofamily Chirotheriidae [Abel, 1935](#)

Chirotheriidae indet.

([Figs. 4–6](#) and [9](#))

Referred specimens: CS.DA.39.3.1 and CS.DA.39.3.2.

Material: A possible partial trackway of pes tracks in slab CS.DA.39 ([Figs. 4–6](#) and [9B](#); [Table 2](#)).

Horizon and locality: Buntsandstein facies, Anisian (Middle Triassic); Navás site (Moncayo massif, Zaragoza, Spain).

Description:

The tracks are poorly-preserved and could be two consecutive pes tracks. The first track is pentadactyl, mesaxonic, asymmetric and semiplantigrade (Fig. 9B). Four digit impressions (I–IV) are directed forward, and one, the digit V impression, is directed laterally. It is longer than wide. The second track preserves the digit V impression, which is also directed laterally, and some impressions directed forwards, which could belong to any of the digit I–IV impressions. The pace length is 72 cm.

Remarks:

As pointed out in the previous section, pes tracks that are semiplantigrade and pentadactyl with a compact anterior digit I–IV group are related with the ichnofamily Chirotheriidae (cf. *Demathieu & Demathieu, 2004*; *King et al., 2005*). Nevertheless, we are not assigning these tracks to a concrete chirotheriid ichnogenus because the proportions of digits I–IV are the most important feature for classification (*Demathieu & Demathieu, 2004*; *King et al., 2005*) and this information cannot be extracted from the tracks due to their state of preservation.

Ichnofamily Rhynchosauroidae *Haubold, 1966*

Ichnogenus *Rhynchosauroides Maidwell, 1911*

Rhynchosauroides isp.

(Figs. 4–6 and 9D–9F)

Referred specimens: CS.DA.39.4, CS.DA.39.5, CS.DA.39.6, CS.DA.39.7, CS.DA.39.8 and CS.DA.39.9.

Material: Part of a possible trackway (CS.DA.39.4, CS.DA.39.5, CS.DA.39.6, CS.DA.39.7 and CS.DA.39.8) and an isolated track (CS.DA.39.9) in slab CS.DA.39 (Figs. 4–6 and 9A–9C; Table 2).

Horizon and locality: Buntsandstein facies, Anisian (Middle Triassic); Navás site (Moncayo massif, Zaragoza, Spain).

Description:

Manus: the best-preserved manus track, CS.DA.39.4 (Fig. 9D), is pentadactyl, ectaxonic, very asymmetric and plantigrade. Four digit impressions (I–IV) are directed forward, and one, the digit V impression, is directed more laterally. The length of the track is 3.7 cm and the width 2.4 cm (length/width ratio 1.54). The digits are longer than wide and rotated medially. Digit IV is the longest. Digit IV > III > II > I > V. The divarication angle II–IV is 10°, I–IV is 50° and I–V is 78°. The digit impressions show clear impressions of claw marks. The palm impression is well-marked and bilobed. Similar to this track is CS.DA.39.9 4 (Fig. 9E), but one of the digit impressions (probably the digit IV impression) is not preserved.

Pes: track CS.DA.39.5 4 (Fig. 9F) is tetradactyl, very asymmetric and digitigrade. The four digit impressions (I–IV) are longer than wide, directed forward and rotated medially. It is not possible to measure the length or width of the track due to its state of preservation. Digit IV is the longest. Digit IV > III > II > I > V. The divarication angle II–IV is 15° and I–IV is 30°. The digit impressions do not show clear impressions of claw marks.

Tracks CS.DA.39.6, CS.DA.39.7 and CS.DA.39.8 are tridactyl and didactyl. The shape and size of the preserved digit impressions are similar to those of tracks CS.DA.39.4 and CS.DA.39.5, and they are located close to them.

Remarks:

There is clear variability among all the tracks. Some of them, CS.DA.39.4–CS.DA.39.8, could be part of the same trackway given their shape, size and location. Therefore, this variability is probably a consequence of the state of preservation and not because they are different morphotypes. The best-preserved tracks present the following main features: four digit impressions (I–IV) directed forward; digits longer than wide and rotated medially; and digits increasing in length from I to IV. In addition, in CS.DA.39.4 and CS.DA.39.10 (manus tracks) there is a digit V impression, which is shorter than the others and is turned outwards. These characters are typical of the ichnogenus *Rhynchosauroides* (Melchor & de Valais, 2006; Hunt & Lucas, 2007a; Avanzini, Piñuela & García-Ramos, 2010; Lucas et al., 2010). However, more than 20 ichnospecies of *Rhynchosauroides* have been defined (see Haubold, 1971), and the validity of some of them has not been discussed. As we have suggested above, moreover, the shape of the tracks studied here is variable, and they are not well enough preserved for a confident determination of the ichnospecies. Accordingly, we have decided to be cautious in assigning these tracks to *Rhynchosauroides* isp.

Undetermined material

Unnamed Morphotype

(Figs. 4–6 and 9C)

Referred specimens: CS.DA.38.4, CS.DA.38.5, CS.DA.38.6, CS.DA.38.7 and CS.DA.39.10.

Material: six footprints in the two slabs (five in CS.DA.38 and one in CS.DA.39); two of them are a pair 4 (Figs. 4–6 and 9C; Table 3).

Horizon and locality: Buntsandstein facies, Anisian (Middle Triassic); Navás site (Moncayo massif, Zaragoza, Spain).

Description:

These are tridactyl, mesaxonic, symmetric and digitigrade tracks. The length is from 2 cm to 2.4 cm, and the width from 1.6 cm to 2.8 cm. The three digit impressions are directed forward. There is little difference in the length of the digits, the central one being the longest. The divergence between the lateral digits is variable. The tracks of the pair CS.DA.38 (Figs. 4–6 and 9C) present a greater divarication angle than the other tracks. The digit impressions of these tracks are the thinnest as well. At least three tracks (CS.DA.38.4.1, CS.DA.38.4.2 and CS.DA.38.5) have an acuminate end.

The pace length in the pair CS.DA.38.4 is 37 cm.

Remarks:

Although some tracks are thinner than others, all the tracks present the same features. Tridactyl, mesaxonic and digitigrade tracks could be associated with non-avian or avian theropod tracks (cf. Thulborn, 1990; De Valais & Melchor, 2008). However, non-avian theropod tracks are generally asymmetric, and there are no avian remains in the Anisian.

The tracks are very shallow and are not well-preserved. Their preservation is not easy to interpret. Thus, it may have been preserved as undertracks and/or they are in fact parts of other more complex kinds of track superimposed (e.g., chirotheriid and/or *Rhynchosauroides*). Because of the poor state of preservation of the specimens, any attribution would be tentative.

DISCUSSION

The Navás site tracks and the Triassic Iberian record

After a reassessment of the Navás site, *Chirotherium barthii*, Chirotheriidae indet., *Rhynchosauroides* isp., and an unnamed morphotype have been identified. As at the Navás site, chirotheriid tracks are well-represented in other Iberian localities. This kind of tracks is the most abundant compared to other ichnogroups. According to the revision of [Díaz-Martínez & Pérez-García \(2011\)](#) and the most recent articles ([Díaz-Martínez & Pérez-García, 2012](#); [Fortuny et al., 2012](#); [Meléndez & Moratalla, 2014](#); this work) on 63 classified remains in 26 publications, 26 correspond to chirotheriid tracks. These tracks have been attributed to *Brachychirotherium* (2), *Chirotherium* (13), *Isochirotherium* (3), *Synaptichnium* (5) and indeterminate chirotheriids (3). The re-evaluation of the type material of *C. ibericus* has demonstrated that it is a junior synonym of *C. barthii*. This latter ichnospecies has also been found at other Iberian localities such as Corral d'en Parera ([Calzada, 1987](#)) and in the Eslida Formation ([Gand et al., 2010](#)), both Anisian in age. [Gand et al. \(2010\)](#) suggested that the presence of *C. barthii* is “rather uncommon in Spain”. What is remarkable is the small size of the Iberian tracks assigned to *C. barthii* ([Figs. 7A–7D](#)), since in the emended description of the diagnosis of this ichnospecies provided by [King et al. \(2005\)](#), the authors proposed that *C. barthii* has a pes length of about 19–22 cm. In the case of the Iberian tracks, the tracks from the Navás site have a pes length of between 11 and 14 cm, whereas the tracks described by [Gand et al. \(2010\)](#) are even smaller (pes length 8.4 cm). [Calzada \(1987\)](#) did not measure the total length of the tracks but the length of digit III (9.5–9.6 cm) according to the scale of the track pictures also seems small in size. Small-sized *C. barthii* tracks have also been described in the Middle Triassic of the United States ([Klein & Lucas, 2010b](#); [Lovelace & Lovelace, 2012](#)), Morocco ([Tourani et al., 2010](#); [Klein et al., 2011](#)), and China ([Xing et al., 2013](#)), and possibly also Switzerland ([Cavin et al., 2012](#)). The small size of the Iberian tracks assigned to *C. barthii* would fit better with the pes length of *C. sickleri*. In fact, [King et al. \(2005\)](#) proposed that “there is a strong possibility that *C. sickleri* may represent the tracks of a juvenile reptile, whose adult tracks might be attributed to *C. barthii* or *C. storetonense* [Morton, 1863](#)”. [Klein & Haubold \(2003\)](#) also showed the similarities between the two ichnotaxa with a landmark analysis and suggested that “one could suspect a juvenile *C. barthii*”. The authors pointed out that some features of *C. sickleri*, such as the manus print morphology and the trackway pattern, were not included in the analysis, which was mainly done with the pes morphology. The Navás site, as well as the recent publications of small-sized *C. barthii* tracks, thus adds valuable data to this debate, and an exhaustive comparison of the two ichnotaxa is needed in order to discern whether *C. sickleri* is an ontogenetic variation of *C. barthii* or in fact a different ichnospecies.

The *C. barthii* pes track CS.DA.38.1.2p has preserved skin traces (Fig. 4) that are not noted in previous reports on the material. Other skin traces were found in the same slab (Fig. 9F), but they are not related with any visible track. The skin impressions were only created because the integument registered on a receptive substrate (Gatesy, 2001; Pérez-Lorente, 2001), and the motion of the skin relative to the sediment during separation strongly influences the morphology of the skin impression (Gatesy, 2001; Avanzini, Piñuela & García-Ramos, 2011). In this case, the ornamentation reveals scales that are sub-rounded to polygonal in shape, and it is present in digit V. These scale marks are similar to other chirotheriid skin impressions studied by Avanzini (2000), suggesting that these kinds of scales are similar to those of birds and extant Archosauria.

Six tracks belonging to *Rhynchosauroides*, including pes and manus tracks, were found at the Navás site. *Rhynchosauroides* is the best-known ichnogenus in the Triassic record of Iberia. It has been found at 13 localities in the provinces of Barcelona, Cantabria, Castellón, Guadalajara, Teruel and Zaragoza (Demathieu & Saiz de Omeñaca, 1976; Demathieu & Saiz de Omeñaca, 1977; Demathieu, Ramos & Sopeña, 1978; Demathieu & Saiz de Omeñaca, 1979; Calzada, 1987; Demathieu & Saiz de Omeñaca, 1990; Ezquerro et al., 1995; Valdiserri, Fortuny & Galobart, 2009; Gand et al., 2010; this work). Four *Rhynchosauroides* ichnospecies have been described in the Iberian Peninsula: *Rhynchosauroides santanderensis* Demathieu & Saiz de Omeñaca, 1976; *Rhynchosauroides virgiliae* Demathieu, Ramos & Sopeña, 1978; *Rhynchosauroides extraneus* Demathieu & Saiz de Omeñaca, 1979; and *Rhynchosauroides simulans* Demathieu & Saiz de Omeñaca, 1979. The temporal record of this ichnotaxon is predominantly Anisian, as exemplified by the Navás site, although it has also been described in the Permian (Valentini, Conti & Mariotti, 2007) and even in the Late Jurassic (Avanzini, Piñuela & García-Ramos, 2010).

Finally, undetermined material has also been found at the Navás site. These tracks are tridactyl and mesaxonic, but they are probably the preserved part of other tracks. In the Iberian record other Triassic tracks with problematic affinities have been cited (see Table S1). The tracks classified as type 3 and type 4 of Demathieu & Saiz de Omeñaca (1976) and Demathieu & Saiz de Omeñaca, 1977) are similar to those from the Navás site. In the former case, the shape of the tracks suggests that they are part of *Rhynchosauroides* tracks. It is therefore possible that the Navás tracks might be as well.

The Navás tracksite presents the *Chirotherium barthii*-*Rhynchosauroides* ichnoassemblage. This ichnoassemblage is common in other Middle Triassic localities in Iberia (Calzada, 1987; Gand et al., 2010), as well as in other ichnoassemblages with greater ichnodiversity described in the Middle Triassic of Europe (e.g., France, Gand, Demathieu & Montenat, 2007; Italy, Avanzini, Bernardi & Nicosia, 2011; Poland, Niedźwiedzki et al., 2007), North Africa (e.g., Morocco, Tourani et al., 2010; Klein et al., 2011) and North America (e.g., Hunt et al., 1993; Heckert, Lucas & Hunt, 2005). Analysis of the ichnoassemblage from the Navás site within the context of the global tetrapod track biochronology of the Triassic shows it to belong to biochron II (*sensu* Klein & Haubold, 2007) or the *Chirotherium barthii* biochron (*sensu* Klein & Lucas, 2010a). Both biochrons

are defined for the upper Olenekian-lower Anisian age, which is coherent with the age of the Navás site, which is here considered lower Anisian.

In the case of the track record here described, the ichnogenera have been attributed to trackmakers belonging to different taxonomic categories in previous literature. The inferred trackmakers are Archosauriformes for *Chirotherium* as well as Lepidosauromorpha/Eosuchia for *Rhynchosauroides* (Klein et al., 2011; Avanzini, Piñuela & García-Ramos, 2011).

The Triassic record of vertebrate tracks in the Iberian Peninsula and the tetrapod-track-based biochrons

Several characteristic track assemblages and ichnotaxa have a restricted stratigraphic range and can therefore be repeatedly observed in the global record in distinct time intervals (Klein & Lucas, 2010a). Several authors (e.g., Haubold, 1969; Demathieu & Haubold, 1974; Olsen, 1980; Lockley & Hunt, 1995; Hunt & Lucas, 2007b; Lucas, 2007; Klein & Haubold, 2007; Klein & Lucas, 2010a; Xing et al., 2014; and references therein) have proposed the possibility of a tetrapod ichnostratigraphy of Triassic sequences. Nevertheless, vertebrate track biochronology faces three main problems that result in it being not as refined as tetrapod body fossils can be: the ichnotaxonomy, the evolutionary turnover rates and facies restrictions (Lucas, 2007). The last two biases are conditioned by the habitat and rate of evolution that is proper to each taxon and animal group (see discussion in Lucas, 2007). Thus the main problem with Triassic footprint biostratigraphy and biochronology is the nonuniform ichnotaxonomy and the evaluation of footprints that show extreme variation in shape due to extramorphological (substrate-related) phenomena (Klein & Lucas, 2010a). For instance, 75 chirotherian ichnospecies have been described from Triassic deposits in Europe, North America, South America, northern and southern Africa, and China (Klein & Haubold, 2007; Klein & Lucas, 2010a), but most of them may be synonyms and/or extramorphological variations of perhaps 35 valid ichnotaxa (Xing et al., 2013).

Since 1897, when the first work on Triassic vertebrate tracks from the Iberian Peninsula was published, 25 scientific works on the topic have been published (see Díaz-Martínez & Pérez-García, 2011; Díaz-Martínez & Pérez-García, 2012; Fortuny et al., 2012; Meléndez & Moratalla, 2014) (Table S1). Vertebrate tracks have been reported from 26 sites, and six new ichnotaxa have been defined: *Chirotherium ibericus*, *R. santanderensis*, *R. virgiliae*, *Chirotherium catalaunicum*, *R. extraneus* and *R. simulans*. More than half of the papers on Triassic tracks were published before the 1990s, and almost none of the Iberian tracks have been re-studied. In all the papers that reassess previously studied tracks, the initial ichnotaxonomic identifications and the age of the track-bearing layers were subsequently modified (e.g., Leonardi, 1959; Gand et al., 2010; Fortuny et al., 2011; Díaz-Martínez & Pérez-García, 2012, this work). In addition to the nonuniform ichnotaxonomy, the Iberian record presents another problem when it comes to comparisons with the biostratigraphy and biochronology proposed for the Triassic tracks. This is the temporal geological context of the ichnological localities. In some papers the age of the tracksite is well defined in terms of chronostratigraphic ages such as Anisian, Ladinian or Rhaetian (e.g., Pascual-Arribas & Latorre-Macarrón, 2000; Gand et al., 2010; Fortuny et al., 2011). In other papers,

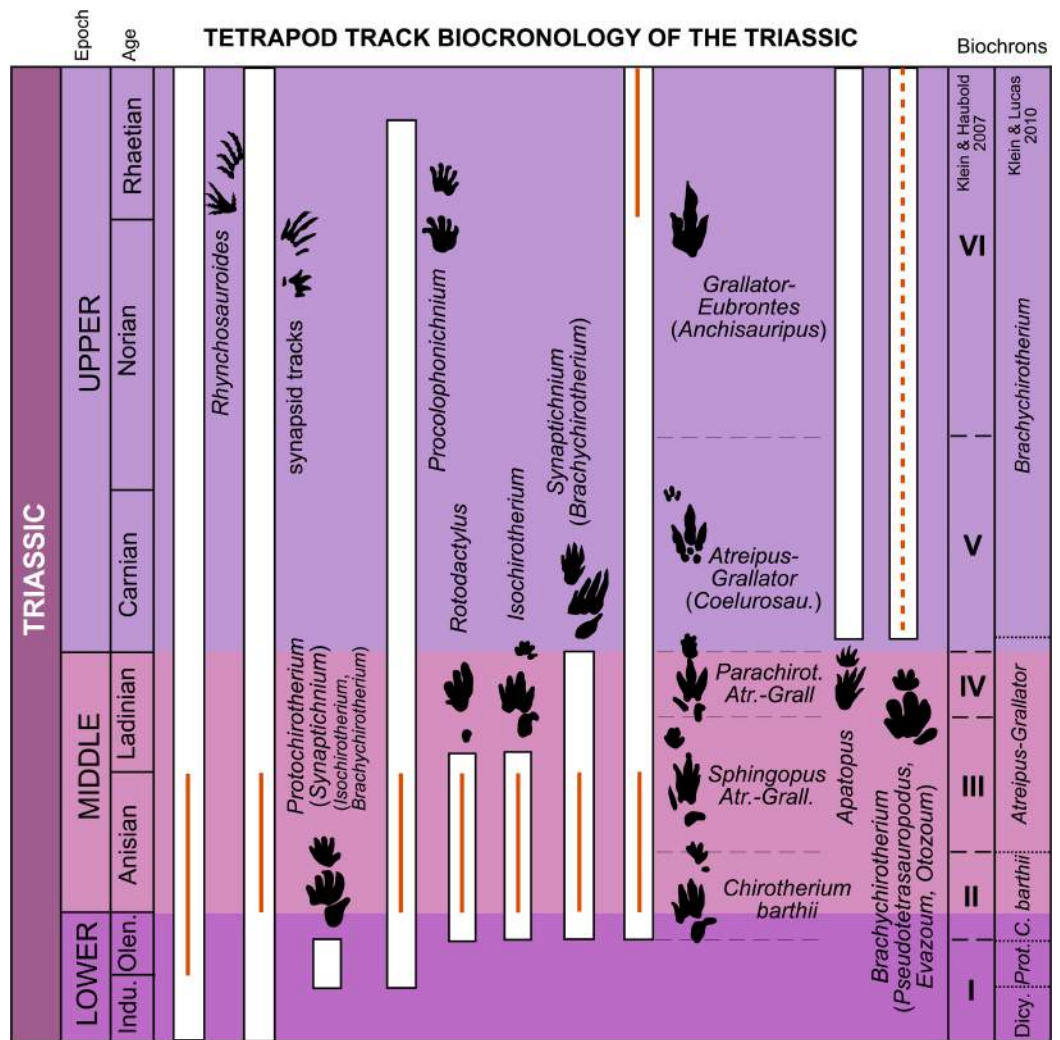


Figure 10 Stratigraphic distribution of tetrapod track ichnotaxa and form groups in the Triassic with the global biochrons compared with the Iberian record. The global biochrons are based on [Klein & Haubold \(2007\)](#) and [Klein & Lucas \(2010a\)](#). The red lines represent the Iberian record based on [Table 4](#). Abbreviations: Atr., Atreipus; Grall., Grallator; Coelurosau., Coelurosaurichnus; Dicy., Dicyodont tracks; Prot., Protochirotherium.

however, authors have located the tracks within the classic Germanic facies (Buntsandstein, Muschelkalk and Keuper) (see [Díaz-Martínez & Pérez-García, 2011](#); [Table S1](#)), which are not considered time intervals, as the development of the different rift systems in central and western Europe was not coeval, causing diachronous facies changes ([López-Gómez, Arché & Pérez-López, 2002](#); and references therein). In this context, we have only compared the Iberian record that is located in a concrete chronostratigraphic age ([Table 4](#); [Fig. 10](#)) with the tetrapod track biochronology of the Triassic proposed by [Klein & Haubold \(2007\)](#) and [Klein & Lucas \(2010a\)](#).

Lowest Triassic-upper Lower Triassic

Klein & Lucas (2010a) define the “dicynodont-tracks” biochron for the latest Changhsingian-Induan stratigraphic interval, during which earliest Triassic dicynodont tracks are characteristic. The authors suggest that this biochron is so far restricted to Gondwana.

For the late Induan-late Olenekian stratigraphic interval, *Klein & Haubold (2007)* propose biochron I, and *Klein & Lucas (2010a)* the *Protochirotherium* biochron. The typical ichnological assemblage of these biochrons is based on the ichnotaxa *Protochirotherium* (*Synaptichnium*), *Rhynchosauroides* and *Procolophonichnium* *Nopcsa, 1923* (*Klein & Lucas, 2010a*).

In the Iberian Peninsula the only record of Triassic tracks for this interval is composed solely of *Rhynchosauroides* tracks considered to be Olenekian-Anisian in age (*Gand et al., 2010*). This is the oldest Triassic track record in the Iberian Peninsula. The ichnotaxon *Rhynchosauroides* has a broad temporal distribution. *Klein & Lucas (2010a)* consider this ichnotaxon to range throughout the Triassic (it is very common in the Late Triassic, *Hunt & Lucas, 2007a*), and *Avanzini, Piñuela & García-Ramos (2010)* even identified *Rhynchosauroides* tracks in the Upper Jurassic of Asturias (Spain). The appearance of this ichnotaxon in Iberia is thus coherent with the global distribution proposed by *Klein & Lucas (2010a)*. Nevertheless, the record is very scarce and does not give concrete data on the biochron, which could be within the Olenekian-Anisian time range given the dominance of *Rhynchosauroides* in some footprint assemblages (*Fig. 10*).

Uppermost Lower Triassic-Middle Triassic

For this interval *Klein & Haubold (2007)* proposed three biochrons, and *Klein & Lucas (2010a)* two. For the late Olenekian-early Anisian, biochron II (*Klein & Haubold, 2007*) and the *Chirotherium barthii* biochron (*Klein & Lucas, 2010a*) were defined. The typical assemblage for this temporal interval is composed of *C. barthii*, *C. sickleri*, *Isochirotherium*, *Synaptichnium* (“*Brachychirotherium*”), *Rotodactylus* *Peabody, 1948*, *Rhynchosauroides*, *Procolophonichnium*, dicynodont tracks and *Capitosauroides* *Haubold, 1970* (*Klein & Lucas, 2010a*).

Klein & Haubold (2007) proposed biochron III for the late Anisian-early Ladinian interval and biochron IV for the late Ladinian. Biochron III is composed of the ichnotaxa *Sphingopus*, *Atreipus* *Olsen & Baird, 1986*, *Grallator* *Hitchcock, 1858*, *Rotodactylus*, *Isochirotherium* and *Synaptichnium* (“*Brachychirotherium*”). Typical of biochron IV are *Parachirotherium*, *Atreipus*, *Grallator*, and *Synaptichnium* (“*Brachychirotherium*”). For almost the same temporal range as biochrons III and IV, *Klein & Lucas (2010a)* defined the *Atreipus-Grallator* biochron in the late Anisian-lowermost Carnian. The typical assemblage of this biochron comprises *Atreipus*, *Grallator* (“*Coelurosaurichnus*”), *Synaptichnium* (“*Brachychirotherium*”), *Isochirotherium*, *Sphingopus*, *Parachirotherium*, *Rhynchosauroides* and *Procolophonichnium*.

The Iberian record in the uppermost Lower Triassic-Middle Triassic time interval is abundant. As suggested above, the oldest remains are Olenekian-Anisian in age and are

composed only of *Rhynchosauroides* tracks (Gand et al., 2010). Calzada (1987) proposed a late Olenekian or early Anisian age for the tracks that he studied in the Buntsandstein of Catalonia, whereas Valdiserri, Fortuny & Galobart (2009) and Fortuny et al. (2012) suggested an Anisian age for these tracks based on magnetostratigraphy and biostratigraphic data. In the Anisian, the Iberian assemblage consists of *Dicynodontipus Liliensterni*, 1944, *Procolophonichnium*, *Rhynchosauroides*, *Rotodactylus*, *Brachychirotherium*, *Chirotherium barthii*, *Isochirotherium*, *Synaptichnium*, *Coelurosaurichnus* Huene, 1941, and *Paratrisauropus* Ellenberger, 1972 (Calzada, 1987; Valdiserri, Fortuny & Galobart, 2009; Gand et al., 2010; Fortuny et al., 2012; this work). In the Ladinian only three localities with vertebrate tracks have been described to date (Demathieu, Pérez-López & Pérez-Lorente, 1999; Fortuny et al., 2012; Meléndez & Moratalla, 2014). Demathieu, Pérez-López & Pérez-Lorente (1999) described tridactyl tracks and referred them to a crurotarsal/dinosauroid trackmaker. Fortuny et al. (2012) studied some vertebrate ichnites that were recovered from the Middle Muschelkalk (Ladinian-early Carnian) and classified them as belonging to the *Chirotheriidae* ichnofamily. Finally, Meléndez & Moratalla (2014) cited the presence of tracks with the general footprint morphology of the “group” formed by the *Chirotherium*–*Isochirotherium*–*Brachychirotherium* ichnogenera.

When the Iberian record for this temporal interval is compared with the tetrapod-track-based biochrons, it can be seen that several characteristic Triassic track assemblages and ichnotaxa with a restricted stratigraphic range are present. For instance, the ichnotaxon *Chirotherium barthii* has been found in four localities of an Anisian age (Table 4). The presence of this ichnotaxon is typical of biochron II of Klein & Haubold (2007) and the *Chirotherium barthii* biochron of Klein & Lucas (2010a), both from the late Olenekian-early Anisian interval. The latter authors suggest that *Chirotherium barthii* disappears during the Anisian. The ichnotaxa *Isochirotherium* and *Rotodactylus* have been found in the Anisian of the Iberian Peninsula as well. Both ichnotaxa have a broader distribution (late Olenekian-early Ladinian) than *C. barthii*, forming part of biochrons II and III of Klein & Haubold (2007) and the *C. barthii* and *Atreipus-Grallator* biochrons of Klein & Lucas (2010a). These ichnotaxa disappear before the end of the Ladinian (Klein & Haubold, 2007). Also present in the Anisian of the Iberian Peninsula are the ichnotaxa *Coelurosaurichnus* and *Paratrisauropus*. *Coelurosaurichnus* is present in biochron III (late Anisian-early Ladinian) of Klein & Haubold (2007) and in the *Atreipus-Grallator* biochron (late Anisian-lowermost Carnian) of Klein & Lucas (2010a). The ichnotaxon *Synaptichnium*, present in the Anisian of Iberia, is typical of biochrons II, III and IV of Klein & Haubold (2007) and the *C. barthii* and *Atreipus-Grallator* biochrons of Klein & Lucas (2010a) for the late Olenekian-Ladinian time range. The ichnotaxon *Brachychirotherium* was cited in the Anisian of the Iberian Peninsula by Gand et al. (2010). Nevertheless, Klein & Haubold (2007) and Klein & Lucas (2010a) placed this ichnotaxon in biochrons V and VI, and in the *Brachychirotherium* biochron of the lowermost Carnian to Rhaetian respectively. After analyzing the tracks classified as *Brachychirotherium* by Gand et al. (2010), we conclude that they present a *Chirotherium* affinity (the digit IV impression is longer than II, and the digit II–IV impressions are similar in thickness).

In this case, the age of these tracks matches with the distribution of *Chirotherium* in the biochronological approaches. Other ichnotaxa with a broad temporal distribution (see [Klein & Lucas, 2010a](#)), such as *Dicynodontipus*, *Procolophonichnium* and *Rhynchosauroides*, have also been found in the Anisian of the Iberian Peninsula.

For the Ladinian, chirotheriid tracks and tracks referred to a crurotarsal/ dinosaurid trackmaker have been found in Iberia. However, these tracks are not useful in biostratigraphic and biochronological studies.

In sum, the Iberian record from the Anisian is coherent with the global biochronology of Triassic tetrapod tracks, but in the late Olenekian and the Ladinian the record is very scarce ([Fig. 10](#)).

Upper Triassic

For the Carnian to Rhaetian, [Klein & Haubold \(2007\)](#) propose two biochrons. Biochron V has a temporal range from lower Carnian to lower Norian and is composed of the ichnotaxa *Atreipus*, *Grallator* and *Brachychirotherium* ([Klein & Haubold, 2007](#)); biochron VI, ranging from the middle Norian to Rhaetian, consists of *Grallator*, *Eubrontes* [Hitchcock, 1845](#) and *Brachychirotherium* ([Klein & Haubold, 2007](#)). By contrast, [Klein & Lucas \(2010a\)](#) propose the *Brachychirotherium* biochron for almost all the Late Triassic (from lowermost Carnian to Rhaetian). This biochron is composed of the assemblage comprising *Brachychirotherium*, *Atreipus*, *Grallator*, *Eubrontes*, *Apatopus*, *Rhynchosauroides* and dicynodont tracks ([Klein & Lucas, 2010a](#)).

In the Iberian Peninsula there are only two localities in the Upper Triassic. [Pérez-López \(1993\)](#) classified a trackway found in the Keuper facies as *Brachychirotherium* cf. *gallicum*. In Europe this facies spans from the late Middle Triassic (Ladinian) through the entire Late Triassic (Carnian to Rhaetian) ([Sues & Fraser, 2010](#)). The presence of *Brachychirotherium* is typical of the lowermost Carnian–Rhaetian, and this could be the age of these Spanish tracks. The other tracksite from the Upper Triassic presents *Eubrontes* and *Anchisauripus* and is dated as Rhaetian in age ([Pascual-Arribas & Latorre-Macarrón, 2000](#)). The ichnotaxon *Eubrontes* is typical of biochron VI (early Norian–Rhaetian) of [Klein & Haubold \(2007\)](#) and the *Brachychirotherium* biochron (lowermost Carnian–Rhaetian) of [Klein & Lucas \(2010a\)](#). Although the Iberian record for the Upper Triassic is not abundant, the data on these tracks are consistent with the global biochronology of Triassic tetrapod tracks ([Fig. 10](#)).

Tetrapod and track diversity in the Triassic of Iberian Peninsula

A noteworthy point that emerges from the previous review is the high difference in ichnodiversity among the Triassic stages in the Iberian Peninsula. According to [Díaz-Martínez, García-Ortiz & Pérez-Lorente \(2015\)](#), this difference can be explained in at least three ways. The first explanation would be that this is a consequence of a greater diversity of trackmakers in a concrete age than in others, this diversity being reflected in the track record. It is also possible that in one age there were more suitable facies for preserving the tracks, so although the diversity might in fact be similar in all the ages, in the Anisian it seems highest; there would thus be a preservational bias against the other ages. Finally, the

high ichnodiversity could also be explained by weathering and erosion processes that affect the rock outcrops as well as the exposed surface area of the track-bearing layers.

The poor track record during Olenekian (Early Triassic) in Iberia is also observed in other European regions. It has been explained as a product of both an ecological bias (only coastal dwellers would be potentially recorded) and/or a real “evolutionary pattern” due to a slow recovery in diversity from the previous Permo-Triassic mass extinction ([Avanzini, Bernardi & Nicosia, 2011](#)). The high diversity of the tetrapod track record during the Early-Middle Triassic could be related with the radiation of tetrapods, reflecting the morphological diversity spanning from a stem-reptile to a “mammalian” foot, from a basal crocodylomorph to a dinosauromorph foot ([Avanzini, Bernardi & Nicosia, 2011](#)). The herein presented data indicates the Anisian as being the age with highest ichnodiversity. As in other European regions the decrease in the tetrapod tracks occurrences after the Anisian could be largely related with a great rise of the sea level and the consequent change to marine environments (e.g., [Avanzini, Bernardi & Nicosia, 2011](#); [Fortuny et al., 2011](#)). In spite of a probable influence of facies bias, the pattern of the Iberian record is consistent with those observed in Germany, France, Italy and USA ([Hunt & Lucas, 2007b](#); [Avanzini, Bernardi & Nicosia, 2011](#)), suggesting that the vertebrate track record reflect an evolutionary pattern. As previously stated (e.g., [Avanzini, Bernardi & Nicosia, 2011](#)) the track reliability for evolutionary studies is confirmed.

Global track record is much more abundant than the skeletal record and provides data as reliable as those obtained from skeletal remains ([Carrano & Wilson, 2001](#); [Avanzini, Bernardi & Nicosia, 2011](#)). This fact is also relevant in the Iberian Triassic record. The skeletal remains of tetrapods, excluding marine groups, from the Triassic of the Iberian Peninsula are rather scarce (see [Fortuny et al., 2011](#)). In the Anisian, capitosaurids, archosauriforms, procolophonids and mastodontosaurid stereospondyls have been found in Catalonia (e.g., [Gaete et al., 1996](#); [Fortuny et al., 2011](#); [Fortuny et al., 2014](#)). Phytosaurs, metoposaurid temnospondyls have been identified in the Carnian-early Norian of Portugal ([Steyer et al., 2011](#); [Mateus et al., 2014](#)). An indeterminate temnospondyl has been cited from Late Triassic of Aragón (Spain) ([Knoll, López-Antoñanzas & Molina-Anadón, 2004](#)). Finally, a mastodontosaurid stereospondyl and the temnospondyl *Metoposaurus algarvensis* have been found in the Triassic-Jurassic boundary of Portugal ([Witzmann & Gassner, 2008](#); [Brusatte et al., 2015](#)). Of all the skeletal remains found in the Triassic of the Iberian Peninsula, only the Anisian archosauriforms and procolophonids can be considered as the probably trackmakers of the chirotheriid and *Procolophonichnium* tracks of the same age. Therefore, the track diversity increase and complement the skeletal record to a better understanding of the Triassic tetrapod diversity in the Iberian Peninsula.

In order to have a more complete vision of the Triassic track record in the Iberian Peninsula, it is therefore important to reassess the rest of the Triassic Iberian ichnological localities not included here because these do not yet have a concrete temporal geological context.

CONCLUSIONS

The ichnotaxonomy of historic vertebrate tracks found in two sandy slabs from the Anisian (Middle Triassic) of the Moncayo massif (Iberian Range, NE Spain) has been re-studied. The tracks previously considered *Chirotherium ibericus* by Navás, and other tracks of the same shape found in the two slabs, have been reassessed and have been classified as *Chirotherium barthii*. *Chirotherium ibericus* has been deemed to be a junior synonym of *Chirotherium barthii*. The rest of the studied tracks have been assigned to Chirotheriidae indet., *Rhynchosauroides* isp. and undetermined material. All the tracks classified as *Chirotherium barthii* in the Iberian Peninsula are characterized by their small size. This point and other reports of small-sized *C. barthii* in other localities around the world shed new light on the differentiation between small-sized *C. barthii* and *C. sickleri*. The *C. barthii*-*Rhynchosauroides* ichnoassemblage present in the Navás tracksite (Anisian in age) is typical of biochron II or the *Chirotherium barthii* biochron, of an Olenekian-lower Anisian age. This ichnoassemblage has also been found in other coeval Iberian localities. Although the Iberian record of Triassic tracks is not continuous and in some ages is more abundant than others, in general it is coherent with the global biochronology of Triassic tetrapod tracks. This further corroborates the usefulness of vertebrate Triassic tracks in biochronology. In the lowermost Lower Triassic-upper Lower Triassic interval, the record is very scarce and only the ichnotaxon *Rhynchosauroides* is cited. The record for the uppermost Lower Triassic-Middle Triassic is abundant. The most complete record is the ichnoassemblage from the Anisian, which is composed of *Dicynodontipus*, *Procolophonichnium*, *Rhynchosauroides*, *Rotodactylus*, *Chirotherium*, *Isochirotherium*, *Coelurosaurichnus*, and *Paratrisauropus*. The late Olenekian and Ladinian record is not well represented. Finally, *Eubrontes*, *Anchisauripus* and probably *Brachychirotherium* have been identified although the Iberian record for the Upper Triassic is not abundant. The analysis could be more complete if the whole of the Iberian record were analyzed. With this paper, therefore, we emphasize the need to reassess the Triassic vertebrate track record of the Iberian Peninsula and specify the age of the localities, in order to have a complete image of this record and compare it with the tetrapod-track-based biochronology and biostratigraphy. Triassic skeletal remains are scarce in the Iberian Peninsula when compared with the ichnological record. Therefore, the track diversity shown in this paper throughout the Triassic complements and improves the information about the tetrapod diversity in the Iberian Peninsula for this age.

ACKNOWLEDGEMENTS

Our thanks go to Juan Jesús Bastero for providing the information about the discovery and the history of fossil. The “Museo de Ciencias Naturales de la Universidad de Zaragoza” and the “Colegio del Salvador (Jesuitas), Zaragoza” permitted us to study and photograph the specimen. We thank Ester Díaz-Berenguer (Museo de Ciencias Naturales de la Universidad de Zaragoza) for allowing us to see the studied material. We thank Adán Pérez-García and Penélope Cruzado-Caballero for their comments on an early version of the manuscript. Finally, we acknowledge Spencer G. Lucas, Lida Xing and the Academic Editor Kenneth

De Baets for their helpful reviews. Rupert Glasgow revised the translation of the text into English.

ADDITIONAL INFORMATION AND DECLARATIONS

Funding

This research was supported by the group IT834-13 of the Basque Government, the projects CGL2010–16447, CGL2010–18851/BTE and CGL2013–47521-P of the Spanish Ministerio de Economía y Competitividad (MINECO the Government of Aragón) (“Grupos Consolidados” H54, and “Dirección General de Patrimonio Cultural”) and the University of Zaragoza (221-393). Ignacio Díaz Martínez is supported by a postdoctoral grant from the Ministerio de Ciencia, Tecnología e Innovación Productiva Consejo Nacional de Investigaciones Científicas y Técnicas (CONICET) of the Government of Argentina. The funders had no role in study design, data collection and analysis, decision to publish, or preparation of the manuscript.

Grant Disclosures

The following grant information was disclosed by the authors:

Group IT834-13 of the Basque Government.

Spanish Ministerio de Economía y Competitividad (MINECO the Government of Aragón): CGL2010–16447, CGL2010–18851/BTE, CGL2013–47521-P.

University of Zaragoza: 221-393.

Ministerio de Ciencia, Tecnología e Innovación Productiva Consejo Nacional de Investigaciones Científicas y Técnicas (CONICET).

Competing Interests

The authors declare there are no competing interests.

Author Contributions

- Ignacio Díaz-Martínez, Diego Castanera, José Manuel Gasca and José Ignacio Canudo conceived and designed the experiments, performed the experiments, analyzed the data, contributed reagents/materials/analysis tools, wrote the paper, prepared figures and/or tables, reviewed drafts of the paper.

Supplemental Information

Supplemental information for this article can be found online at <http://dx.doi.org/10.7717/peerj.1044#supplemental-information>.

REFERENCES

- Abel O. 1935. *Vorzeitliche Lebensspuren XV*. Jena: Gustav Fischer Verlag.
- Arché A, López-Gómez J. 2006. Late Permian to Early Triassic transition in central and NE Spain: biotic and sedimentary characteristics. *Geological Society, London, Special Publications* 265(1):261–280 DOI 10.1144/GSL.SP.2006.265.01.12.

- Arribas J. 1985.** Base litoestratigráfica de las facies Buntsandstein y Muschelkalk en la Rama Aragonesa de la Cordillera Ibérica, Zona Norte. *Estudios Geológicos* **41**:47–57 DOI [10.3989/egeol.85411-2689](https://doi.org/10.3989/egeol.85411-2689).
- Avanzini M. 2000.** *Synaptichnium* tracks with skin impressions from the Anisian (Middle Triassic) of the Southern Alps (Val di Non-Italy). *Ichnos* **7**(4):243–251 DOI [10.1080/10420940009380164](https://doi.org/10.1080/10420940009380164).
- Avanzini M, Renesto S. 2002.** A review of *Rhynchosauroides tirolicus* Abel, 1926 ichnospecies (Middle Triassic: Anisian-Ladinian) and some inferences on *Rhynchosauroides* trackmaker. *Rivista Italiana di Paleontologia e Stratigrafia* **108**:51–66.
- Avanzini M, Piñuela L, García-Ramos JC. 2010.** First report of a Late Jurassic lizard-like footprint (Asturias, Spain). *Journal of Iberian Geology* **36**(2):175–180 DOI [10.1111/j.1502-3931.2011.00276.x](https://doi.org/10.1111/j.1502-3931.2011.00276.x).
- Avanzini M, Piñuela L, García-Ramos JC. 2011.** Late Jurassic footprints reveal walking kinematics of theropod dinosaurs. *Lethaia* **45**:338–352.
- Avanzini M, Bernardi M, Nicosia U. 2011.** The Permo-Triassic tetrapod faunal diversity in the Italian southern Alps. In: Dar A, ed. *Earth and environmental sciences*. Rijeka: INTECH Open Access Publisher, 591–608.
- Baird D. 1954.** “*Chirotherium lulli*”: a pseudosuchian reptile from New-Jersey. *Bulletin of the Museum of Comparative Zoology* **5**(2):164–192.
- Baird D. 1957.** Triassic reptile footprint faunales from Milford, New Jersey. *Bulletin of the Museum of Comparative Zoology at Harvard College* **117**(5):449–524.
- Bastero Monserrat JJ. 1989.** *Longinos Navás, científico jesuita*. Zaragoza: Universidad de Zaragoza.
- Bertling M, Braddy SJ, Bromley RG, Demathieu GR, Genise J, Mikuláš R, Rindsberg AK, Nielsen JK, Nielsen KSS, Schlirf M, Uchman A. 2006.** Names for trace fossils: a uniform approach. *Lethaia* **39**(3):265–286 DOI [10.1080/00241160600787890](https://doi.org/10.1080/00241160600787890).
- Beurlen K. 1950.** Neue Fährtenfundeaus der fränkischen Trias. *Neues Jahrbuch Für Geologie und Paläontologie Monatshefte B* 308–320.
- Bock W. 1952.** Triassic reptilian tracks and trends of locomotive evolution. *Journal of Paleontology* **2**(3):395–433.
- Bourquin S, Durand M, Díez JB, Broutin J, Fluteau F. 2007.** The Permian-Triassic boundary and Early Triassic sedimentation in Western European basins: an overview. *Journal of Iberian Geology* **33**:221–236.
- Bourquin S, Bercovici A, López-Gómez J, Díez JB, Broutin J, Ronchi A, Durand M, Arché A, Linol B, Amour F. 2011.** The Permian-Triassic transition and the onset of Mesozoic sedimentation at the northwestern peri-Tethyan domain scale: Palaeogeographic maps and geodynamic implications. *Palaeogeography, Palaeoclimatology, Palaeoecology* **299**(1–2):265–280 DOI [10.1016/j.palaeo.2010.11.007](https://doi.org/10.1016/j.palaeo.2010.11.007).
- Brusatte SL, Butler RJ, Mateus O, Steyer JS. 2015.** A new species of *Metoposaurus* from the Late Triassic of Portugal and comments on the systematics and biogeography of metoposaurid temnospondyls. *Journal of Vertebrate Paleontology* **35**(3):e912988 DOI [10.1080/02724634.2014.912988](https://doi.org/10.1080/02724634.2014.912988).
- Calafat F, Fornós JJ, Marzo M, Ramos-Guerrero E, Rodríguez-Perea A. 1987.** Icnología de vertebrados de la facies Buntsandstein de Mallorca. *Acta Geológica Hispánica* **21-22**:515–520.
- Calderón S. 1897.** Una huella de *Cheirotherium* de Molina de Aragón. *Actas de la Sociedad Española de Historia Natural* **26**:27–29.
- Calzada S. 1987.** Niveles fosilíferos de la facies Buntsandstein (Trias) en el sector norte de los Catalánides. *Cuadernos de Geología Ibérica* **11**:115–130.

- Carrano MT, Wilson JA. 2001.** Taxon distributions and the tetrapod track record. *Paleobiology* 27:564–582 DOI 10.1666/0094-8373(2001)027<0564:TDATTT>2.0.CO;2.
- Casanovas Cladellas ML, Santafé Llopis JV, Gómez Alba J. 1979.** Presencia de *Chirotherium* en el Triásico Catalán. *Boletín Informativo del Instituto Provincial de Paleontología de Sabadell* 9:34–42.
- Cavin L, Avanzini M, Bernardi M, Piuz A, Proz PA, Meister C, Boissonnas J, Meyer CA. 2012.** New vertebrate trackways from the autochthonous cover of the Aiguilles Rouges Massif and reevaluation of the dinosaur record in the Valais, SW Switzerland. *Swiss Journal of Palaeontology* 131(2):317–324 DOI 10.1007/s13358-012-0040-0.
- Clark NDL, Aspen P, Corrance H. 2002.** *Chirotherium barthii* Kaup 1835 from the Triassic of the Isle of Arran, Scotland. *Scottish Journal of Geology* 38(2):83–92 DOI 10.1144/sjg38020083.
- Demathieu G. 1966.** *Rhynchosauroides petri* et *Sphingopus ferox*, nouvelles empreintes de reptiles de grès triasique de la bordure Nord-Est du Massif Central. *Comptes Rendus de l'Académie des Sciences D* 263:483–486.
- Demathieu G. 1970.** Les empreintes de pas de vertébrés du Trias de la bordure N-E du Massif Central. *Cahiers de Paléontologie édition du Centre National de la Recherche Scientifique* 1970:1–291.
- Demathieu G, Demathieu P. 2004.** Chirotheria and other ichnotaxa of the European Triassic. *Ichnos* 11:79–88 DOI 10.1080/10420940490444898.
- Demathieu G, Haubold H. 1974.** Evolution und Lebensgemeinschaft terrestrischer Tetrapoden nach ihren Fährten in der Trias. *Freiberger Forschungshefte C* 298:51–72.
- Demathieu G, Saiz de Omeñaca J. 1976.** La faune ichnologique du Trias de Puentenansa dans son environnement paléogéographique (Santander, Espagne). *Bulletin de la Société Géologique de France* 18:1251–1256 DOI 10.2113/gssgfbull.S7-XVIII.5.1251.
- Demathieu G, Saiz de Omeñaca J. 1977.** Estudio del *Rhynchosauroides santanderiensis*, n. sp., y otras nuevas huellas de pisadas en el Trias de Santander, con notas sobre el ambiente paleográfico. *Acta Geológica Hispánica* 12(1):49–54.
- Demathieu G, Saiz de Omeñaca J. 1979.** Características y significado del *Rhynchosauroides extraneus* n. sp., *Rh. simulans* n. sp. y otras nuevas huellas del Triásico de Cantabria. *Boletín de la Real Sociedad Española de Historia Natural. Sección Geológica* 77(1):91–99.
- Demathieu G, Saiz de Omeñaca J. 1990.** Primeros resultados del estudio de un nuevo yacimiento de icnofauna triásica en Peña Sagra (Cantabria, España). *Estudios Geológicos* 46(1–2):147–150 DOI 10.3989/egol.90461-2446.
- Demathieu G, Wright R. 1988.** A new approach to the discrimination of chirotheroid ichnospecies by means of multivariate statistics: Triassic eastern border of the French Massif Central. *Geobios* 21:729–739 DOI 10.1016/S0016-6995(88)80090-1.
- Demathieu G, Ramos A, Sopena A. 1978.** Fauna icnológica del Triásico del extremo noroccidental de la Cordillera Ibérica (Prov. de Guadalajara). *Estudios Geológicos* 34:175–186.
- Demathieu GR, Pérez-López A, Pérez-Lorente F. 1999.** Enigmatic ichnites in the middle Triassic of Southern Spain. *Ichnos* 6(4):229–237 DOI 10.1080/10420949909386454.
- De Valais S, Melchor RN. 2008.** Ichnotaxonomy of bird-like footprints: an example from the Late Triassic-Early Jurassic of northwest Argentina. *Journal of Vertebrate Paleontology* 28(1):145–159 DOI 10.1671/0272-4634(2008)28[145:IOBFAE]2.0.CO;2.
- Díaz-Martínez I, Pérez-García A. 2011.** Estudio bibliográfico de las icnitas de vertebrado triásicas de España. In: Pérez-García A, Gascó F, Gasulla JM, Escaso F, eds. *Viajando a Mundos Pretéritos*. Morella: Ayuntamiento de Morella, 111–122.

- Díaz-Martínez I, Pérez-García A. 2012.** Historical and comparative study of the first Spanish vertebrate paleoichnological record and bibliographic review of the Spanish chiroteroiid footprints. *Ichnos* **19**:141–149 DOI [10.1080/10420940.2012.685565](https://doi.org/10.1080/10420940.2012.685565).
- Díaz-Martínez I, García-Ortiz E, Pérez-Lorente F. 2015.** A new dinosaur tracksite with small footprints in the Urbión Group (Camereros Basin, Lower Cretaceous, La Rioja, Spain). *Journal of Iberian Geology* **41**(1):167–175 DOI [10.5209/rev_JIGE.2015.v41.n1.48661](https://doi.org/10.5209/rev_JIGE.2015.v41.n1.48661).
- Díez JB, Bourquin S, Broutin J, Ferrer J. 2007.** The Iberian Permian Triassic ‘Buntsandstein’ of the Aragonian Branch of the Iberian range (Spain) in the West-European sequence stratigraphical framework: a combined palynological and sedimentological approach. *Bulletin de la Société Géologique de France* **178**:187–203 DOI [10.2113/gssgfbull.178.3.179](https://doi.org/10.2113/gssgfbull.178.3.179).
- Ellenberger P. 1972.** Contribution á la classification des Pistes de Vértébrés du Trias: les types du Stormberg d’Afrique du Sud (I). *Palaeovertebrata Memoire Extraordinaire* **134**:1–104.
- Ezquerro R, Zurita C, Soria AR, Martínez P. 1995.** Icnitas de vertebrados en las facies Buntsandstein (Triásico inferior) del Macizo de Montalbán (Peñarroyas, Provincia de Teruel). *Geogaceta* **18**:109–112.
- Falkingham PL. 2014.** Interpreting ecology and behaviour from the vertebrate fossil track record. *Journal of Zoology* **292**:222–228 DOI [10.1111/jzo.12110](https://doi.org/10.1111/jzo.12110).
- Fichter J, Kunz R. 2004.** New genus and species of chirotheroid tracks in the Detfurth-Formation (Middle Bunter, Lower Triassic) of Central Germany. *Ichnos* **11**:183–193 DOI [10.1080/10420940490444997](https://doi.org/10.1080/10420940490444997).
- Fichter J, Kunz R. 2011.** Neue Nachweise chirotheroider Fährten in der Detfurth-Formation (Mittlerar Buntsandstein, Untere Trias) bei Wilfhagen. *Geologisches Jahrbuch Hessen* **137**:5–18.
- Fortuny J, Bolet A, Sellés AG, Cartanyà J, Galobart À. 2011.** New insights on the Permian and Triassic vertebrates from the Iberian Peninsula with emphasis on the Pyrenean and Catalanian basins. *Journal of Iberian Geology* **37**:65–86 DOI [10.5209/rev_JIGE.2011.v37.n1.5](https://doi.org/10.5209/rev_JIGE.2011.v37.n1.5).
- Fortuny J, Bolet A, Oms O, Bonet M, Diviu M, Rodríguez P, Galobart À. 2012.** Permian and Triassic ichnites from the Catalanian and Pyrenean basins (Eastern Iberian Peninsula). State of the art and new findings. *Fundamental* **20**:73–75. Available at <http://www.fundaciondinopolis.org/index.php/actividades/difusion/publicaciones-fundacion/fundamental>.
- Fortuny J, Bolet A, Sellés AG, Galobart À. 2014.** A potential record of a procolophonid parareptile from the Triassic of the Iberian Peninsula. *Geologica Acta* **12**:121–126.
- Gaete R, Galobart A, Carpio MM, Palomar J. 1996.** Primeros resultados sistemáticos y bioestratigráficos del yacimiento de tetrápodos fósiles de la facies Buntsandstein de La Mora (Pla de la Calma, Barcelona). *Cuadernos de Geología Ibérica* **20**:331–346.
- Gand G, Demathieu G, Montenat C. 2007.** Les traces de pas d’Amphibiens, de Dinosaures et autres Reptiles du Mésozoïque français: inventaire et interprétations. *Palaeovertebrata* **35**:1–141.
- Gand G, De La Horra R, Galán-Abellán B, López-Gómez J, Barrenechea JF, Arché A, Benito MI. 2010.** New ichnites from the Middle Triassic of the Iberian ranges (Spain): paleoenvironmental and paleogeographical implications. *Historical Biology* **22**(1):40–56 DOI [10.1080/08912961003644096](https://doi.org/10.1080/08912961003644096).
- Gatesy SM. 2001.** Skin impressions of Triassic theropods as records of foot movement. *Bulletin of the Museum of Comparative Zoology* **156**:137–149.
- Gómez de Llarena J. 1917.** La estratigrafía del Moncayo. *Boletín de la Real Sociedad Española de Historia Natural* **17**:568–572.
- Haubold H. 1966.** Therapsiden- und Rhynchocephalien-Fahrtenausdem Buntsandstein Sudthuringens. *Hercynia* **3**:147–183.

- Haubold H. 1969.** Parallelisierung terrestrischer Ablagerungen der tieferen Trias mit Pseudosuchia-Fährten. *Geologie* **18**:836–843.
- Haubold H. 1970.** Versuche einer Revision der Amphibien-Fährten des Karbon und Perm. *Freiberger Forschungs Hefte C* **260**:83–117.
- Haubold H. 1971.** Ichnia amphibiorum et reptiliorum fossilium. *Handbuch der Palaeoherpetologie* **18**:1–124.
- Haubold H. 1984.** *Saurierfährten*. Wittenberg: Ziemsen.
- Heckert AB, Lucas SG, Hunt AP. 2005.** Triassic vertebrate fossils in Arizona. *New Mexico Museum of Natural History and Science, Bulletin* **29**:16–44.
- Heller F. 1952.** Reptilienfährten-Funde aus dem Ansbacher Sandstein des Mittleren Keupers von Franken. *Geologische Blätter für NO-Bayern* **2**:129–141.
- Hitchcock E. 1845.** An attempt to name, classify, and describe the animals that made the fossil footmarks of New England. *Proceedings of the 6th Annual Meeting of the Association of American Geologists and Naturalists* **6**:23–25.
- Hitchcock E. 1858.** *Ichnology of New England. A report on the sandstone of the Connecticut Valley, especially its fossil footmarks*. Boston: William White.
- Huene F. von. 1941.** Die Tetrapoden-Fährten im toskanischen Verrucano und ihre Bedeutung. *Neues Jahrbuch für Mineralogie, Geologie und Paläontologie B* **86**:1–34.
- Hunt AP, Lucas SG. 2007a.** A new tetrapod ichnogenus from the Upper Triassic of New Mexico, with notes on the ichnotaxonomy of *Rhynchosauroides*. *New Mexico Museum of Natural History and Science, Bulletin* **41**:71–76.
- Hunt AP, Lucas SG. 2007b.** The Triassic tetrapod track record: Ichnofaunas, ichnofacies and biochronology. *New Mexico Museum of Natural History and Science, Bulletin* **41**:78–87.
- Hunt AP, Santucci VL, Lockley MG, Olson TJ. 1993.** Dicynodont trackways from the Holbrook Member of the Moenkopi Formation (middle Triassic: Anisian), Arizona, USA. *New Mexico Museum of Natural History and Science, Bulletin* **3**:213–218.
- International Commission on Zoological Nomenclature. 1999.** *International code of zoological nomenclature*. 4th edition. Washington: American Association for Zoological Nomenclature.
- Kaup JJ. 1835a.** [Letter] In Hohnbaum, D.C. *Urwelt-Handel. Die Dorfzeitung*, no. 34, 18.ii.1835 [also in *Allgemeine Rreussische Staatszeitung* (22.ii.1835) and reviewed in *Berlinische Nachrichten* (24.ii.1835)].
- Kaup JJ. 1835b.** Mitteilung über Tierfährten bei Hildburghausen. *Neues Jahrbuch für Mineralogie, Geologie und Paläontologie* **1835**:327–328.
- Kaup JJ. 1835c.** *Das tierreich 1*. Darmstadt: Johann Philipp Diehl.
- Kim YK, Kim KS, Lockley MG, Seo SJ. 2010.** Dinosaur skin impressions from the Cretaceous of Korea: new insights into modes of preservation. *Palaeogeography, Palaeoclimatology, Palaeoecology* **293**:167–174 DOI [10.1016/j.palaeo.2010.05.012](https://doi.org/10.1016/j.palaeo.2010.05.012).
- King MJ, Sarjeant WAS, Thompson DB, Tresise G. 2005.** A revised systematic ichnotaxonomy and review of the vertebrate footprint ichnofamily Chirotheriidae from the British Triassic. *Ichnos* **12**:241–299 DOI [10.1080/10420940591009312](https://doi.org/10.1080/10420940591009312).
- Kirchner H. 1927.** *Über fossile Tierfährten mit besonderer Berücksichtigung der sog. Chirotheriumfährten im frankischen Buntsandstein*. Verhandlungen der Physikalisch-medizinischen Gesellschaft zu Würzburg.
- Klein H, Haubold H. 2003.** Differenzierung von ausgewählten Chirotheriender Trias mittels Landmarkanalyse. *Hallesches Jahrbuch Geowiss* **25**:21–36.

- Klein H, Haubold H. 2007.** Archosaur footprints—potential for biochronology of Triassic continental sequences. *New Mexico Museum of Natural History and Science, Bulletin* **41**:120–130.
- Klein H, Lucas SG. 2010a.** Tetrapod footprints—their use in biostratigraphy and biochronology of the Triassic. *Geological Society, London, Special Publications* **334(1)**:419–446 DOI [10.1144/SP334.14](https://doi.org/10.1144/SP334.14).
- Klein H, Lucas SG. 2010b.** Review of the tetrapod ichnofauna of the Moenkopi Formation/Group (Early-Middle Triassic of the American Southwest). *New Mexico Museum of Natural History and Science, Bulletin* **50**:1–67.
- Klein H, Voigt S, Saber H, Schneider JW, Hminna A, Fischer J, Lagnaoui A, Brosig A. 2011.** First occurrence of a Middle Triassic tetrapod ichnofauna from the Argana Basin (western High Atlas, Morocco). *Palaeogeography, Palaeoclimatology, Palaeoecology* **307(1)**:218–231 DOI [10.1016/j.palaeo.2011.05.021](https://doi.org/10.1016/j.palaeo.2011.05.021).
- Knoll F, López-Antoñanzas R, Molina-Anadón JA. 2004.** Filling a gap: Late Triassic nonmarine tetrapods from the Iberian Peninsula. *Journal of Vertebrate Paleontology* **24**:79A.
- Kuhn O. 1958.** *Die fährten der vorzeitlichen Amphibien und reptilien*. Meisenbach: Verlagshaus.
- Kuhn O. 1963.** *Ichnia tetrapodium*. Gravenhage: Westphal.
- Leonardi P. 1959.** Orme chirotheriane triassich spagnole. *Estudios Geológicos* **15**:235–245.
- Lilienstern HR von. 1944.** Eine Dicynodontier fährteausdem *Chirotherium* sandsteinvon Hessbergbei Hildburghausenr. *Paläontologische Zeitschrift* **23**:368–385 DOI [10.1007/BF03160445](https://doi.org/10.1007/BF03160445).
- Lockley MG, Hunt A. 1995.** *Dinosaur tracks: and other fossil footprints of the western United States*. New York: Columbia University Press.
- Lockley MG, Meyer CA. 2000.** *Dinosaur tracks and other fossil footprints of Europe*. New York: Columbia University Press.
- López-Gómez J, Arché A, Pérez-López A. 2002.** Permian and Triassic. In: Gibbons W, Moreno T, eds. *The geology of Spain*. Geological Society Publishing House, 185–212.
- Lovelace DM, Lovelace SD. 2012.** Paleoenvironments and paleoecology of a Lower Triassic invertebrate and vertebrate ichnoassemblage from the Red Peak Formation (Chugwater Group), central Wyoming. *Palaios* **27(9)**:636–657 DOI [10.2110/palo.2012.p12-011r](https://doi.org/10.2110/palo.2012.p12-011r).
- Lucas SG. 2007.** Tetrapod footprint biostratigraphy and biochronology. *Ichnos* **14(1–2)**:5–38 DOI [10.1080/10420940601006792](https://doi.org/10.1080/10420940601006792).
- Lucas SG, Spielmann JA, Klein H, Lerner AJ. 2010.** Ichnology of the Upper Triassic (Apachean) Redonda Formation, east-central New Mexico. *New Mexico Museum of Natural History & Science, Bulletin* **47**:1–74.
- Maidwell F. 1911.** Notes on footprints from the Keuper of Runcorn Hill. *Liverpool Geological Society* **11**:140–152.
- Mateus O, Butler RJ, Brusatte SL, Whiteside JH, Steyer JS. 2014.** The first phytosaur (Diapsida, Archosauriformes) from the Late Triassic of the Iberian Peninsula. *Journal of Vertebrate Paleontology* **34**:970–975 DOI [10.1080/02724634.2014.840310](https://doi.org/10.1080/02724634.2014.840310).
- Melchor RN, de Valais S. 2006.** A review of Triassic tetrapod track assemblages from Argentina. *Palaeontology* **49(2)**:355–379 DOI [10.1111/j.1475-4983.2006.00538.x](https://doi.org/10.1111/j.1475-4983.2006.00538.x).
- Meléndez N, Moratalla JJ. 2014.** Los Arroturos: new reptile tracksite from the Muschelkalk (Middle Triassic) of Paredes de Sigüenza (Guadalajara province, Spain). In: *74th annual meeting Society of vertebrate paleontology*. Berlin: Abstracts Book, 186.

- Mietto P. 1987.** *Parasynaptichnium gracilis* nov. ichnogen., nov. isp. (Reptilia: Archosauria Pseudosuchia) nell'Anisico inferiore di Recoaro (Pre alpi vicentine- Italia). *Memorie Scienze Geologiche* **39**:37–47.
- Morton GH. 1863.** Description of the footprints of *Cheirotherium* and *Equisetum*, found at Storeton, Cheshire. *Proceedings of the Liverpool Geological Society* **1**:1–17.
- Navás L. 1904.** Excursión al Moncayo. *Boletín de la Sociedad Aragonesa de Ciencias Naturales* **3**:139–167.
- Navás L. 1906.** El *Chirosaurus ibericus* sp. nov. *Boletín de la Sociedad Aragonesa de Ciencias Naturales* **5**:208–213.
- Niedźwiedzki G, Kin A, Remin Z, Małkiewicz M. 2007.** Nowe znaleziska tropów dinozaurów z osadów liasowych Gór Świętokrzyskich. *Przegląd Geologiczny* **55(10)**:870–879.
- Nopcsa F. von. 1923.** Die Familien der Reptilien. *Fortschritte der Geologie Paläontologie* **2**:1–210.
- Olsen PE. 1980.** A comparison of the vertebrate assemblages from the Newark and Hartford Basins (Early Mesozoic, Newark Supergroup) of Eastern North America. In: Jacobs LL, ed. *Aspects of vertebrate history*. Flagstaff: Museum of Northern Arizona, 35–53.
- Olsen PE, Baird D. 1986.** The ichnogenus *Atreipus* and its significance for Triassic biostratigraphy. In: Padian K, ed. *The beginning of the age of dinosaurs*. Cambridge: Cambridge University Press, 61–87.
- Pascual-Arribas C, Latorre-Macarrón P. 2000.** Huellas de *Eubrontes* y *Anchisauripus* en Carrascosa de Arriba (Soria, España). *Boletín Geológico y Minero* **111(1)**:21–32.
- Peabody FE. 1948.** Reptile and amphibian trackways from the Moenkopi Formation of Arizona and Utah. *Bulletin Department Geological Science* **27**:295–468.
- Peabody FE. 1957.** Colton's *Chirotherium*. *Plateau* **30**:17–19.
- Pellicer F, Echeverría MT. 2004.** El modelado glaciar y periglaciar en el Macizo del Moncayo. In: Peña Monné JL, Longares Aladrén LA, Sánchez Fabre M, eds. *Geografía física de aragón. Aspectos generales y temáticos*. Zaragoza: Institución Fernando el Católico y Universidad de Zaragoza, 173–186.
- Pérez-López A. 1993.** Estudio de las huellas de reptil, del icnogénero *Brachychirotherium*, encontradas en el Triásico subbético de Cambil (Jaén). *Estudios Geológicos* **49**:77–83.
- Pérez-Lorente F. 2001.** *Paleoicnología. Los dinosaurios y sus huellas en La Rioja*. Logroño: Fundación Patrimonio Paleontológico de la Rioja.
- Péron S, Bourquin S, Fluteau F, Guillocheau F. 2005.** Paleoenvironment reconstructions and climate simulations of the Early Triassic: impact of the water and sediment supply on the preservation of fluvial system. *Geodinamica Acta* **18**:431–446 DOI [10.3166/ga.18.431-446](https://doi.org/10.3166/ga.18.431-446).
- Ramírez del Pozo J. 1980.** *Tabuena* [geologic map]. In: *Mapa Geológico de España, MAGNA, hoja 352 25-14, Scale 1:50.000*. Madrid: IGME, Madrid.
- Razzolini NL, Vila B, Castanera D, Falkingham PL, Barco JL, Canudo JI, Manning PL, Galobart À. 2014.** Intra-trackway morphological variations due to substrate consistency: the El Frontal dinosaur tracksite (Lower Cretaceous, Spain). *PLoS ONE* **9(4)**:e93708 DOI [10.1371/journal.pone.0093708](https://doi.org/10.1371/journal.pone.0093708).
- Sarjeant WAS. 1990.** A name for the trace of an act: approaches to the nomenclature and classification of fossil vertebrate footprints. In: Carpenter K, Currie P, eds. *Dinosaur systematics: perspectives and approaches*. Cambridge: Cambridge University Press, 299–307.
- Soria AR, Liesa CL, Rodríguez-López JP, Meléndez N, de Boer PL, Meléndez A. 2011.** An early Triassic evolving erg system (Iberian Chain, NE Spain): palaeoclimate implications. *Terra Nova* **23**:76–84.

- Steyer JS, Mateus O, Butler R, Brusatte S, Whiteside J. 2011.** A new metoposaurid (temnospondyl) bonebed from the Late Triassic of Portugal. In: *71st annual meeting society of vertebrate paleontology, program and abstracts*, p. 200.
- Sues H-D, Fraser NC. 2010.** *Triassic life on land: the great transition*. New York: Columbia University Press.
- Thulborn T. 1990.** *Dinosaur tracks*. London: Chapman and Hall.
- Tourani A, Benaouiss N, Gand G, Bourquin S, Jalil NE, Broutin J, Battail B, Germain D, Khaldoune F, Sebban S, Steyer J-S, Vacant R. 2010.** Evidence of an early Triassic age (Olenekian) in Argana Basin (High Atlas, Morocco) based on new chirotherioid traces. *Comptes Rendus Palevol* **9**(5):201–208 DOI [10.1016/j.crpv.2010.05.001](https://doi.org/10.1016/j.crpv.2010.05.001).
- Valdiserri D, Avanzini M. 2007.** A tetrapod ichnoassociation from the Middle Triassic (Anisian, Pelsonian) of Northern Italy. *Ichnos* **14**(1–2):105–116 DOI [10.1080/10420940601010703](https://doi.org/10.1080/10420940601010703).
- Valdiserri D, Fortuny J, Galobart A. 2009.** New insight on old material: Triassic tetrapods footprints in Catalonia (NE Iberian Peninsula). In: *Tenth International Symposium on Mesozoic Ecosystems*, Teruel: Abstract Book, 163–164.
- Valentini M, Conti MA, Mariotti N. 2007.** Lacertoid footprints of the Upper Permian Arenaria di Val Gardena Formation (Northern Italy). *Ichnos* **14**(3–4):193–218 DOI [10.1080/10420940601049974](https://doi.org/10.1080/10420940601049974).
- Witzmann F, Gassner T. 2008.** Metoposaurid and mastodontosaurid stereospondyls from the Triassic–Jurassic boundary of Portugal. *Alcheringa* **32**:37–51 DOI [10.1080/03115510701757316](https://doi.org/10.1080/03115510701757316).
- Xing L, Klein H, Lockley MG, Li J, Zhang J, Matsukawa M, Xiao J. 2013.** *Chirotherium* trackways from the Middle Triassic of Guizhou, China. *Ichnos* **20**(2):99–107 DOI [10.1080/10420940.2013.788505](https://doi.org/10.1080/10420940.2013.788505).
- Xing LD, Klein H, Lockley MG, Kan ZZ, Zhang JP, Peng GZ, Ye Y. 2014.** First chirothere and possible grallatorid footprint assemblage from the Upper Triassic Baoding Formation of Sichuan Province, southwestern China. *Palaeogeography, Palaeoclimatology, Palaeoecology* **412**:169–176 DOI [10.1016/j.palaeo.2014.07.032](https://doi.org/10.1016/j.palaeo.2014.07.032).